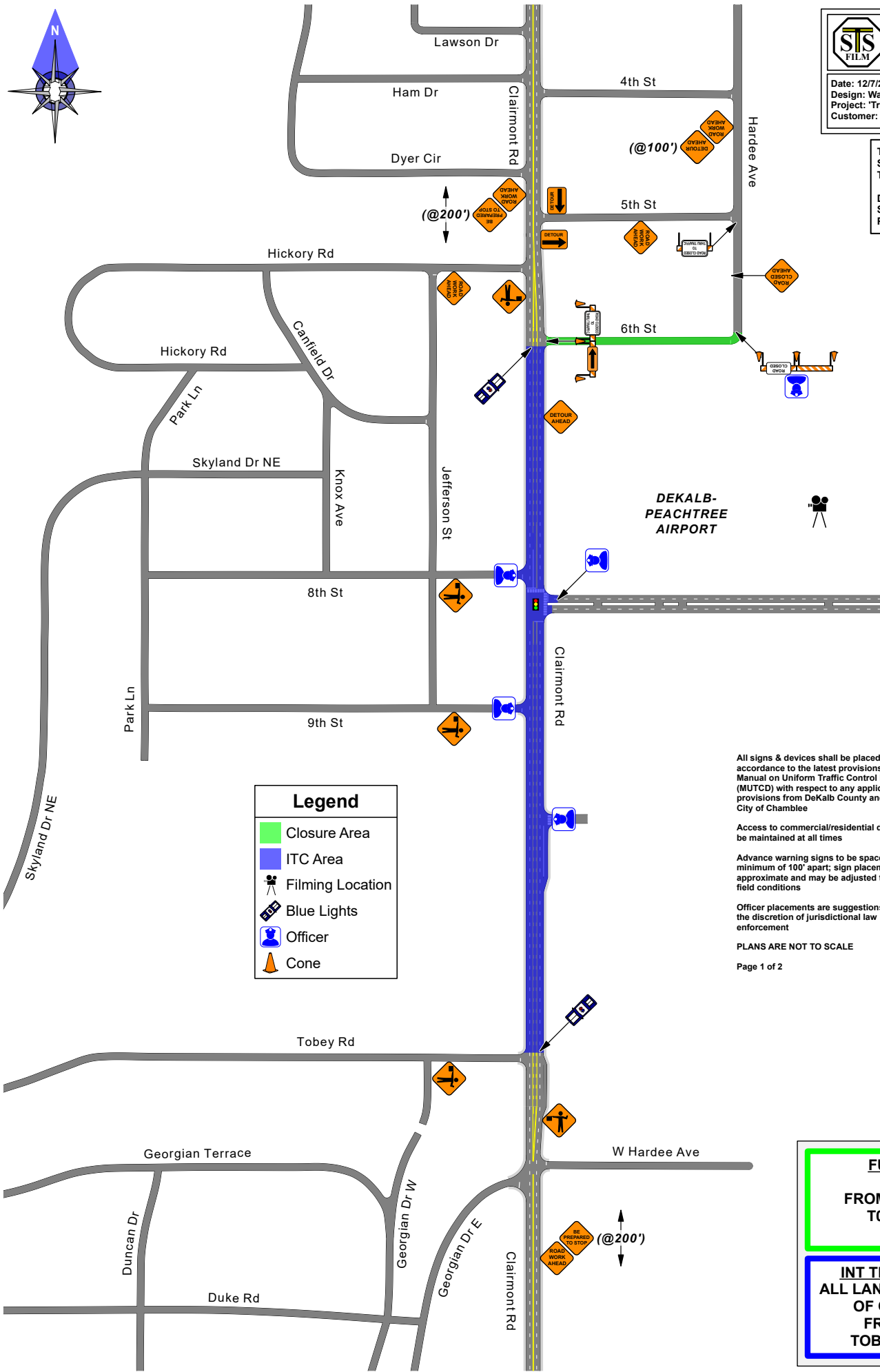


STS FILM Southeastern Traffic Supply, LLC
 1500 Veterans Memorial Hwy SE
 Mableton, GA 30126
 404.989.2441

Date: 12/7/22 Draft: 1
 Design: Walter W. Thompson (c:) 706.254.1919
 Project: "True Lies", S1
 Customer: 20th Television

Type of Roads: Urban
 Speed Limit: 25 mph
 Traffic Volume: Moderate

DROP: 12/12
 SHOOT: 12/13
 PICKUP: 12/14



Legend

- Closure Area
- ITC Area
- Filing Location
- Blue Lights
- Officer
- Cone

All signs & devices shall be placed in accordance to the latest provisions of the Manual on Uniform Traffic Control Devices (MUTCD) with respect to any applicable provisions from DeKalb County and/or the City of Chamblee

Access to commercial/residential drives to be maintained at all times

Advance warning signs to be spaced at a minimum of 100' apart; sign placement is approximate and may be adjusted to fit field conditions

Officer placements are suggestions and at the discretion of jurisdictional law enforcement

PLANS ARE NOT TO SCALE

Page 1 of 2

FULL CLOSURE
 6TH ST:
 FROM CLAIMONT RD
 TO HARDEE AVE
 (650 FT)

INT TRAFFIC CONTROL
 ALL LANES/ INTERSECTIONS
 OF CLAIMONT RD:
 FROM 6TH ST TO
 TOBEY RD (2,500 FT)

DETOUR ROUTES

FULL CLOSURE
6TH ST:
FROM CLAIRMONT RD
TO HARDEE AVE
(650 FT)

NORTHBOUND CLAIRMONT RD

- 1. CONTINUE on Clairmont Rd**
- 2. Turn RIGHT onto 5th St**

SOUTBOUND HARDEE AVE

- 1. Turn RIGHT onto 5th St**
- 2. Turn LEFT onto Clairmont Rd**

All signs & devices shall be placed in accordance to the latest provisions of the Manual on Uniform Traffic Control Devices (MUTCD) with respect to any applicable provisions from DeKalb County and/or the City of Chamblee

Access to commercial/residential drives to be maintained at all times

Advance warning signs to be spaced at a minimum of 100' apart; sign placement is approximate and may be adjusted to fit field conditions

Officer placements are suggestions and at the discretion of jurisdictional law enforcement

PLANS ARE NOT TO SCALE

Page 2 of 2

	Southeastern Traffic Supply, LLC 1500 Veterans Memorial Hwy SE Mableton, GA 30126 404.989.2441
	Date: 12/7/22 Design: Walter W. Thompson (c:) 706.254.1919 Project: 'True Lies', S1 Customer: 20th Television