

**Kingston
University**
London

Kingston University Production Offices for Hire





Introduction

Base onsite and benefit from four campuses set in a leafy, riverside location and offers a huge amount, and variety of locations that are perfect for filming and photography. The highlight is our landmark building, the Town House, which features an amphitheatre-inspired courtyard and roof terrace. We also have a replica A&E ward, flight simulator, wind tunnel, forensic house, board rooms, offices, workshops, locker rooms, labs, classrooms and dance and fitness studios. Our brand new building, the School of Art, has an array of state-of-the-art studios for photography, film, music and sound recording, stop-motion and art design plus green screens. Other campuses feature private roads, a riverside walkway and halls of accommodation.

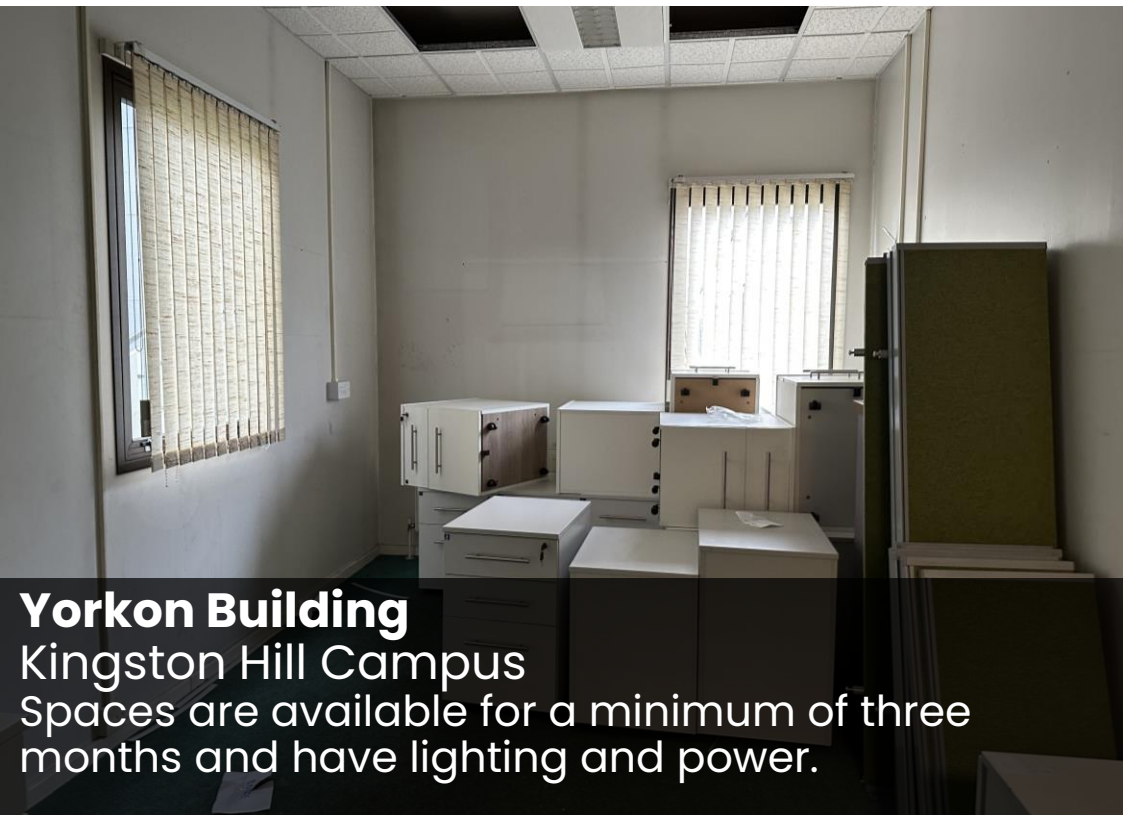
We are now delighted to offer productions offices for the length of their production (minimum of three months hire). We also have spaces to props, costume and construction. To make an enquiry, please contacted our dedicated Film Officers at kingstonuni@filmfixer.co.uk or call: 020 3904 4545.





Yorkon Building
Kingston Hill Campus
Two floors of large open plan and single offices
(with lift and step free access). Parking onsite.



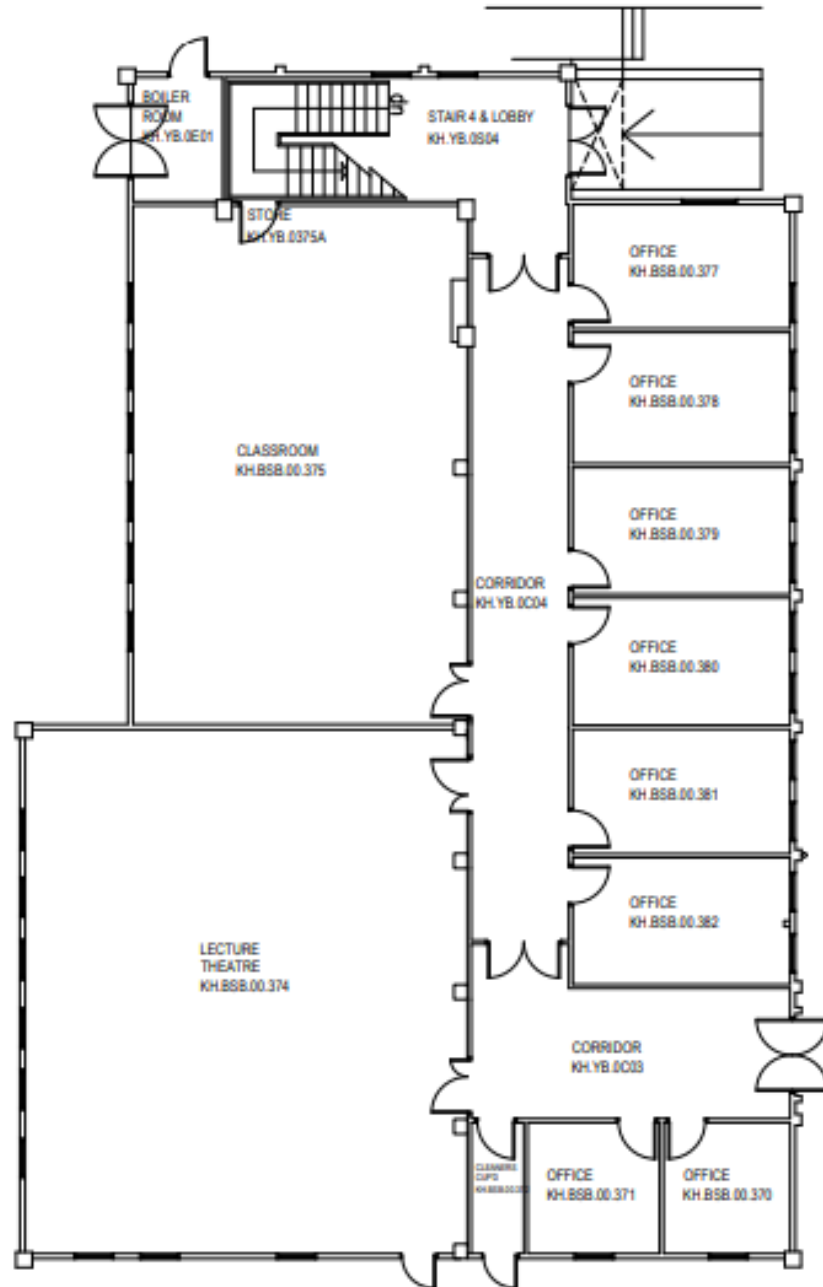


Yorkon Building
Kingston Hill Campus
Spaces are available for a minimum of three months and have lighting and power.

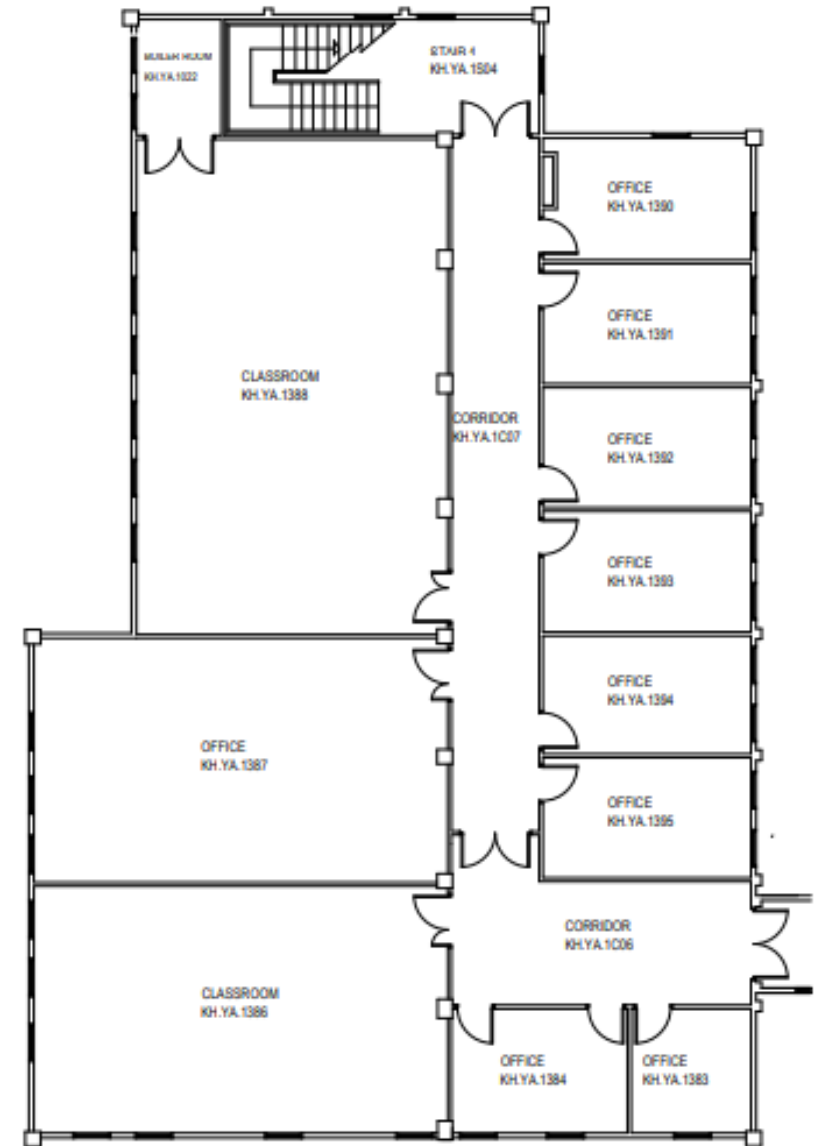


FILMFXR

Yorkon Building – Floor Plans



Ground



First



Former Swan Pub – Middle Mill Campus
Independent lockable unit – previously used
an art gallery. Has own working kitchen and
toilets.

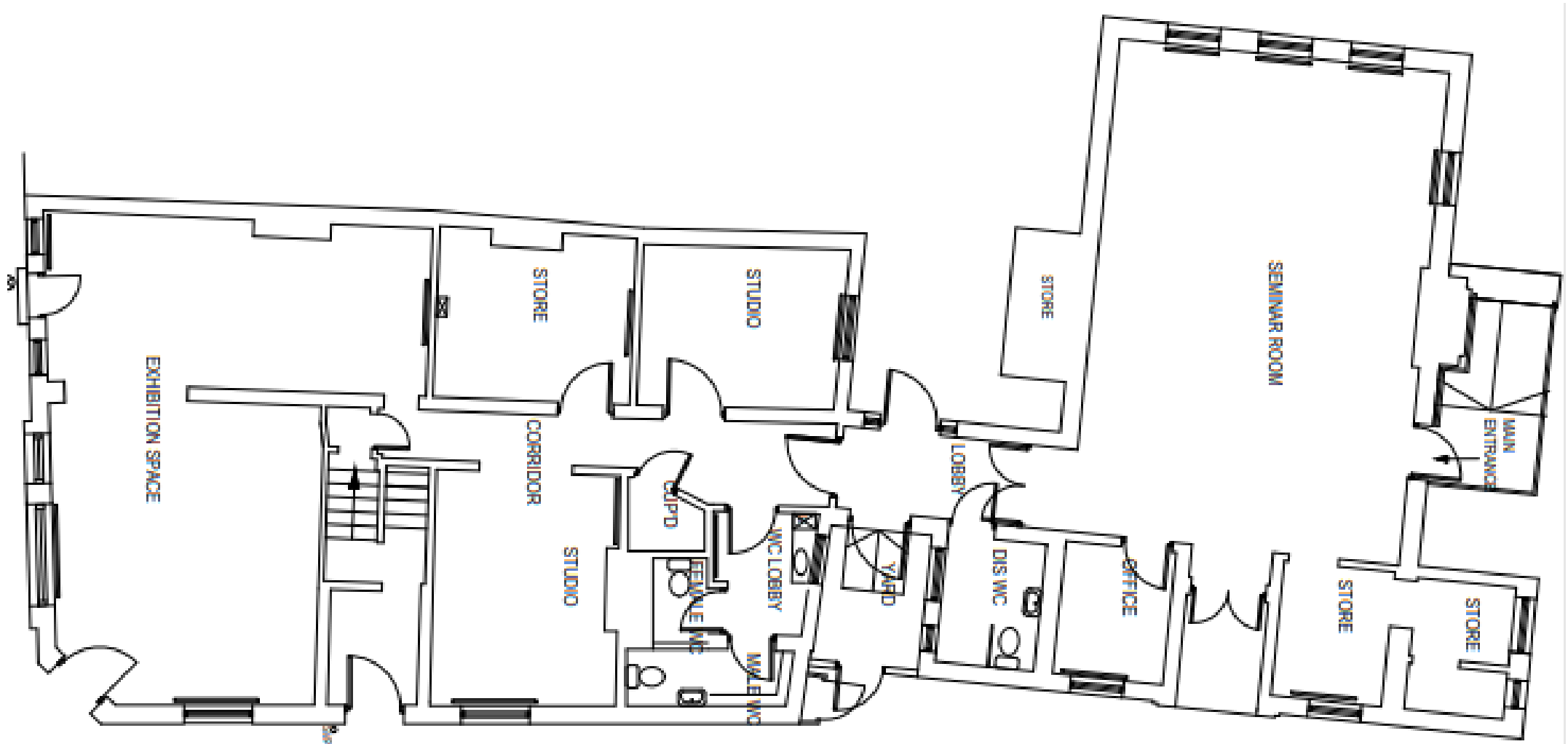




Former Swan Pub – Middle Mill Campus
Multiple entrances (step free) with a private courtyard. Large Hall space to rear.
NB: there is a private dwelling above.



Former Swan Pub – Floor Plans



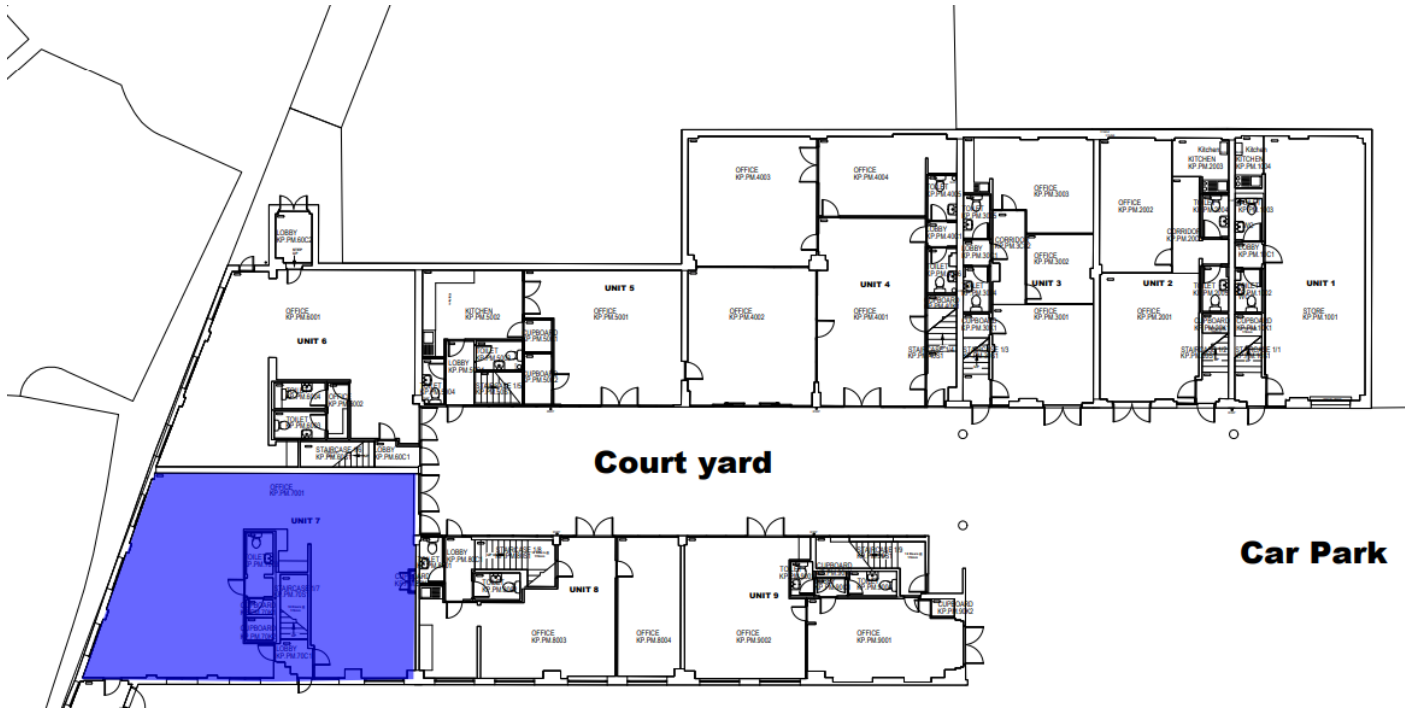
Princess Mews



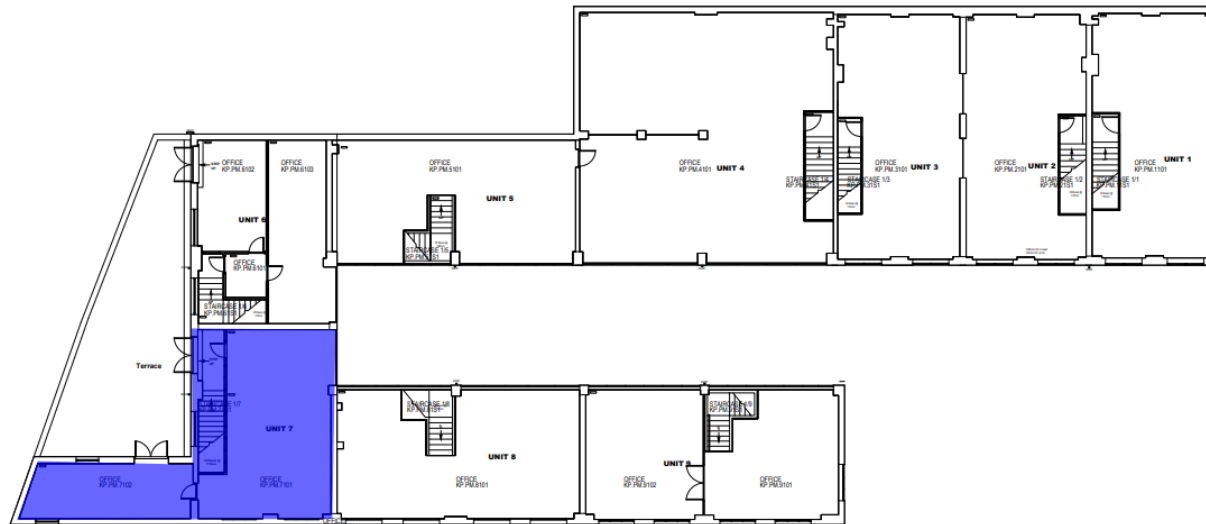
Princess Mews offers an additional space possibly for props, costume or construction storage, and within a short walk from Former Swan Pub.. Split over two floors this allows for a workshop downstairs and offices upstairs and own toilet onsite. Parking onsite within Middle Mill Campus.



Princess Mews – Floor Plans



Ground



First

Fees

Production Offices are **from £5,000+VAT per week** (depending on the space required). A security and damage fee will be taken and returned based on the same conditions of the spaces. Water & Electricity readings will be taken on the start and end of the hire contract (and are chargeable at the base rate). Tech & Crew Parking are additional costs.

For Location Filming whilst onsite – all request need prior approval for additional parking

Exact **rates are calculated based on the type of and needs of the production**. We take into consideration the following factors:

- Total amount of people on site (including artists, agency, contributors, entourage etc)
- Amount of time on site (including estimated prep. / strike time and hold days)
- Location(s) required
- Scale of equipment (ie. drones, cranes, generators)
- Level of exclusivity or closure required
- Parking requirements (ie. unit base, tech vehicles, caterers, crew cars)
- Additional spaces required (ie. for green rooms, catering, crew/crowd holding, video village)
- Budget (your maximum budget for this location)
- Type of production (ie. studio vs independent feature, HETV vs unscripted comedy, luxury brand vs independent shop)

To receive a quote, **please email your requirements to kingstonuni@filmfixer.co.uk**. We will provide you with an initial, estimated quote to be used as a guideline. Once we receive your application and final proposal, we will supply a final quote.

Unit bases are charged at a flat rate of £1,500 per 24 hours (charged pro rata).

We also **charge an administration fee of £75 per hour of processing time**. Each booking will require a different amount of processing depending on requirements and changes. An estimated guide is as follows:

- Studio feature / HETV: 6-10 hours
- Photo shoot: 4-6 hours
- Charity, student etc: 2-4 hours
- Unit base only: 1 hour


All rates quoted are subject to VAT. Refundable damage deposits are taken for all bookings.

Non-refundable holding deposits are taken for larger scale or longer length bookings.

Cleared payment is required before the start of all bookings.

Public liability insurance of a minimum of £5 million is required for all bookings (drones, significant set dressing, special effects etc may require £10 million +).





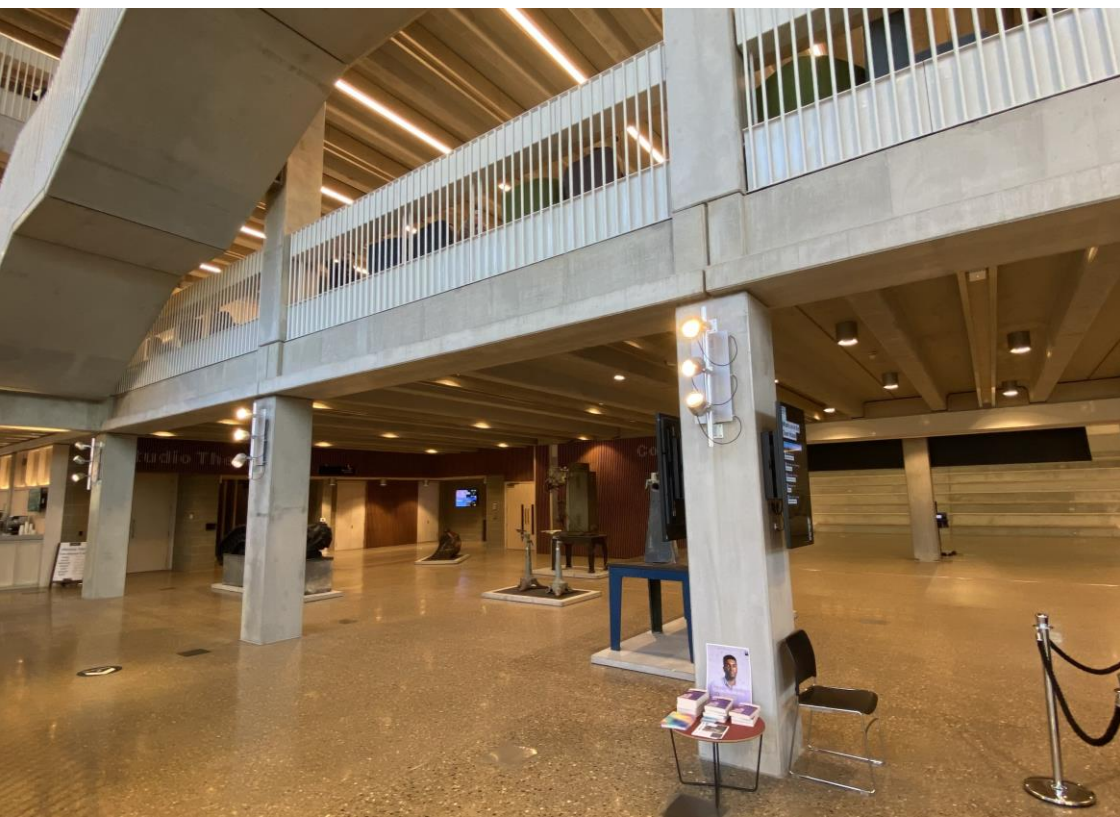
Make the most your production being based on campus by using some of the other buildings and facilities...



The Courtyard



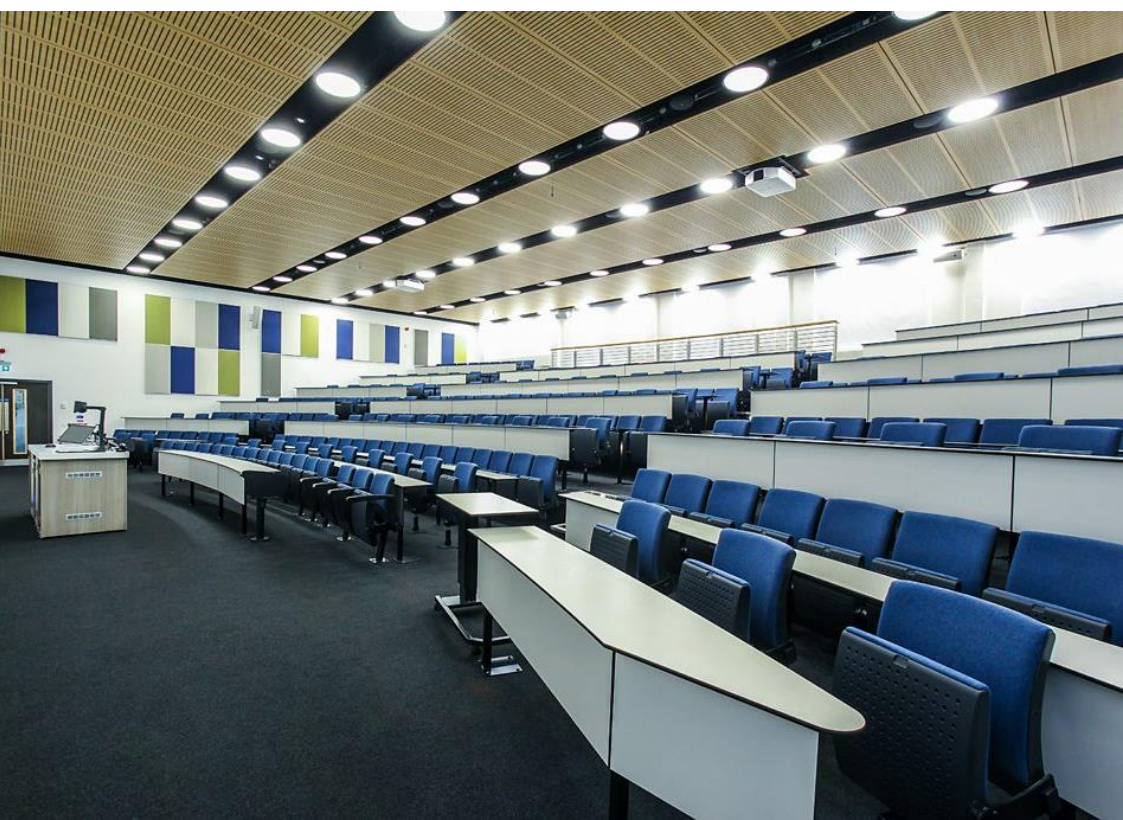
Townhouse

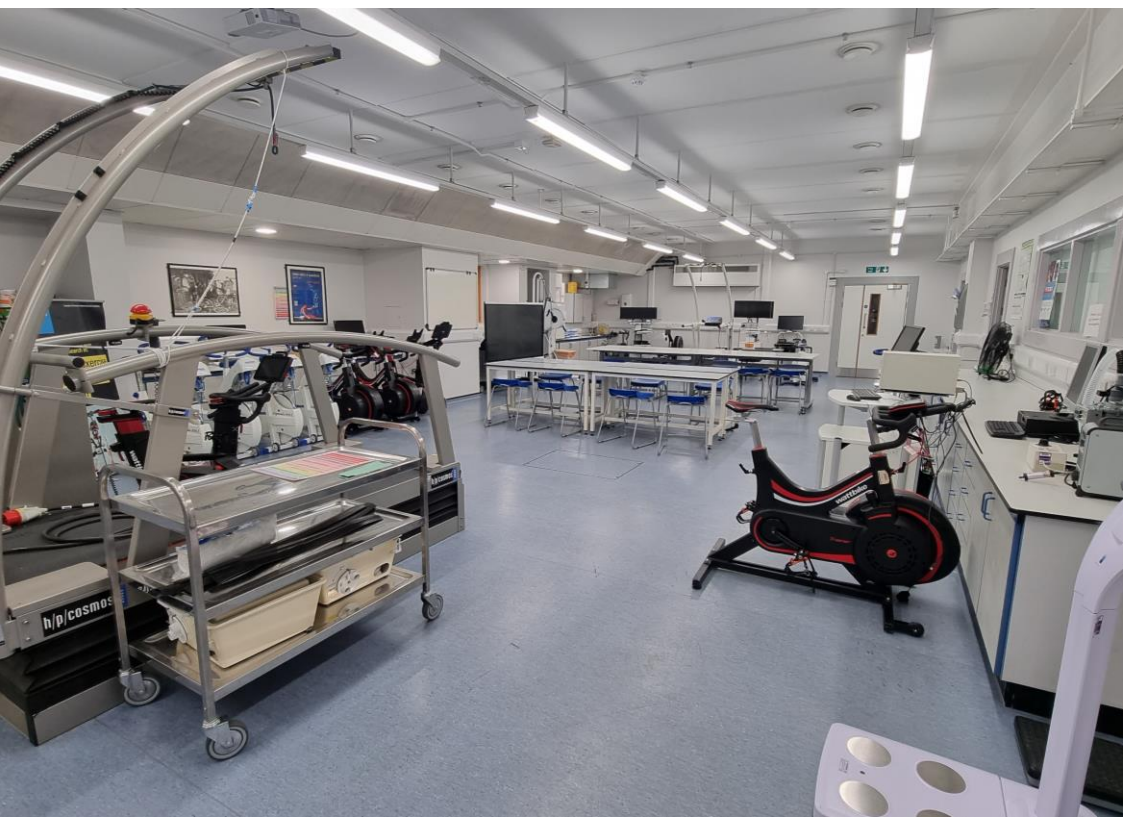




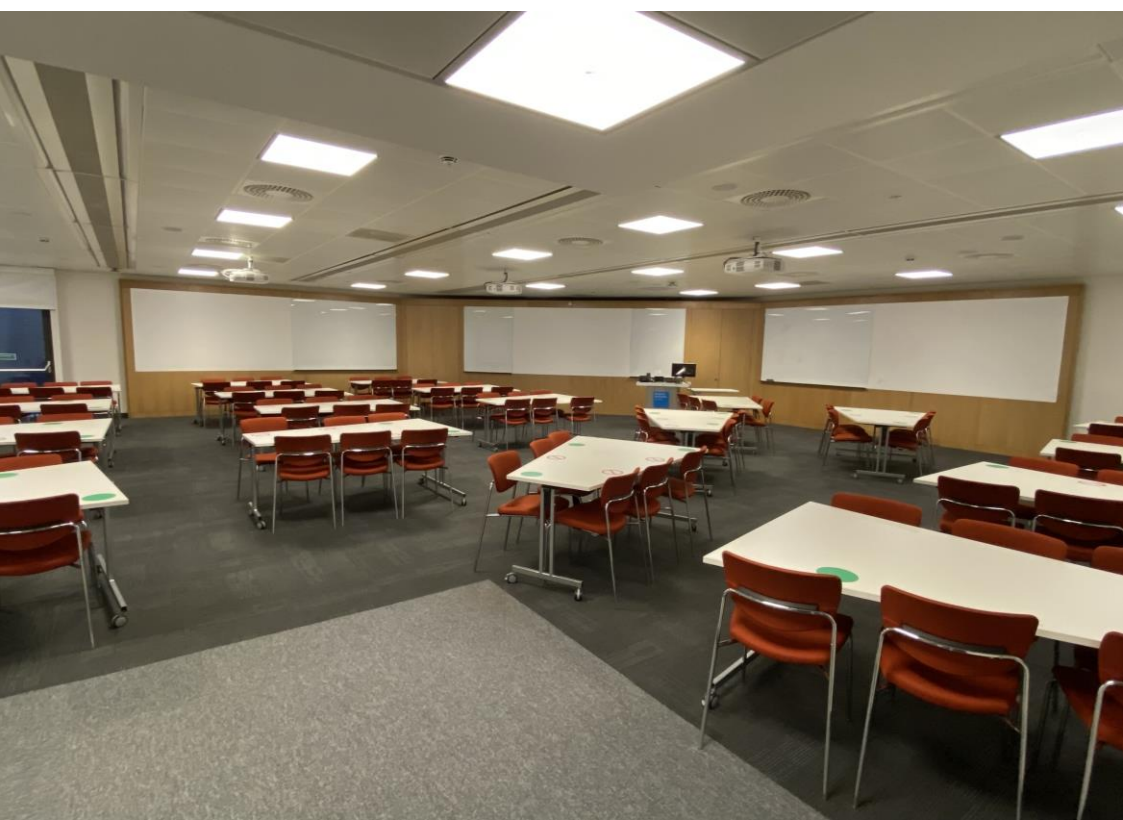












Coombehurst House









Tolworth Sports Ground





www.filmfixer.co.uk

T: 020 3904 4545

E: kingstonuni@filmfixer.co.uk

**Kingston
University**
London

