



**Kingston
University**
London

Kingston University



FILMFXR

Introduction



Kingston University consists of four campuses set in a leafy, riverside location and offers a huge amount, and variety of locations that are perfect for filming and photography. The highlight is our landmark building, the Town House, which features an amphitheatre-inspired courtyard and roof terrace. We also have a replica A&E ward, flight simulator, wind tunnel, forensic house, board rooms, offices, workshops, locker rooms, labs, classrooms and dance and fitness studios. Our brand new building, the School of Art, has an array of state-of-the-art studios for photography, film, music and sound recording, stop-motion and art design plus green screens. Other campuses feature private roads, a riverside walkway and halls of accommodation, plus the stunning gardens at Coombehurst Music School are the perfect backdrop for a period drama. We can host unit bases of any size plus have numerous spaces for holding, green rooms and catering.

We can take bookings during term time but we strongly encourage bookings at weekends or out-of-term times, where we can offer much more flexible and availability. **To make an enquiry, please contact our dedicated Film Officers Tim and Adam at kingstonuni@filmfixer.co.uk**





Contents

P3 | **Fees**

P4 | **Penrhyn Road Campus**

P6 | **Town House**

P7 | **Courtyard**

P16 | **Kingston Hill Campus**

P16 | **School of Business**

P17 | **Coombehurst House**

P20 | **Nightingale Centre**

P23 | **Knights Park Campus**

P24 | **School of Art**

P31 | **Halls of Residence**

P34 | **Roehampton Vale Campus**

P36 | **Tolworth Sports Ground**

P37 | **Contact**



Fees

Due to Kingston University's busy calendar, we regret that only commercial applications are considered, regardless of the scale and location. As such, **we are unable to accept proposals** that cannot match the **minimum rate of £750 + VAT per day**.

Current Kingston University students do not require a permit from FilmFixer – please contact events@kingston.ac.uk

Exact **rates are calculated based on the type of and needs of the production**. We take into consideration the following factors:

- Total amount of people on site (including artists, agency, contributors, entourage etc)
- Amount of time on site (including estimated prep. / strike time and hold days)
- Location(s) required
- Scale of equipment (ie. drones, cranes, generators)
- Level of exclusivity or closure required
- Parking requirements (ie. unit base, tech vehicles, caterers, crew cars)
- Additional spaces required (ie. for green rooms, catering, crew/crowd holding, video village)
- Budget (your maximum budget for this location)
- Type of production (ie. studio vs independent feature, HETV vs unscripted comedy, luxury brand vs independent shop)

To receive a quote, **please email your requirements to kingstonuni@filmfixer.co.uk**. We will provide you with an initial, estimated quote to be used as a guideline. Once we receive your application and final proposal, we will supply a final quote.

Unit bases are charged at a flat rate of £1,500 per 24 hours (charged pro rata).

We also **charge an administration fee of £75 per hour of processing time**. Each booking will require a different amount of processing depending on requirements and changes. An estimated guide is as follows:

- Studio feature / HETV: 6-10 hours
- Photo shoot: 4-6 hours
- Charity, student etc: 2-4 hours
- Unit base only: 1 hour

All rates quoted are subject to VAT. Refundable damage deposits are taken for all bookings.

Non-refundable holding deposits are taken for larger scale or longer length bookings.

Cleared payment is required before the start of all bookings.

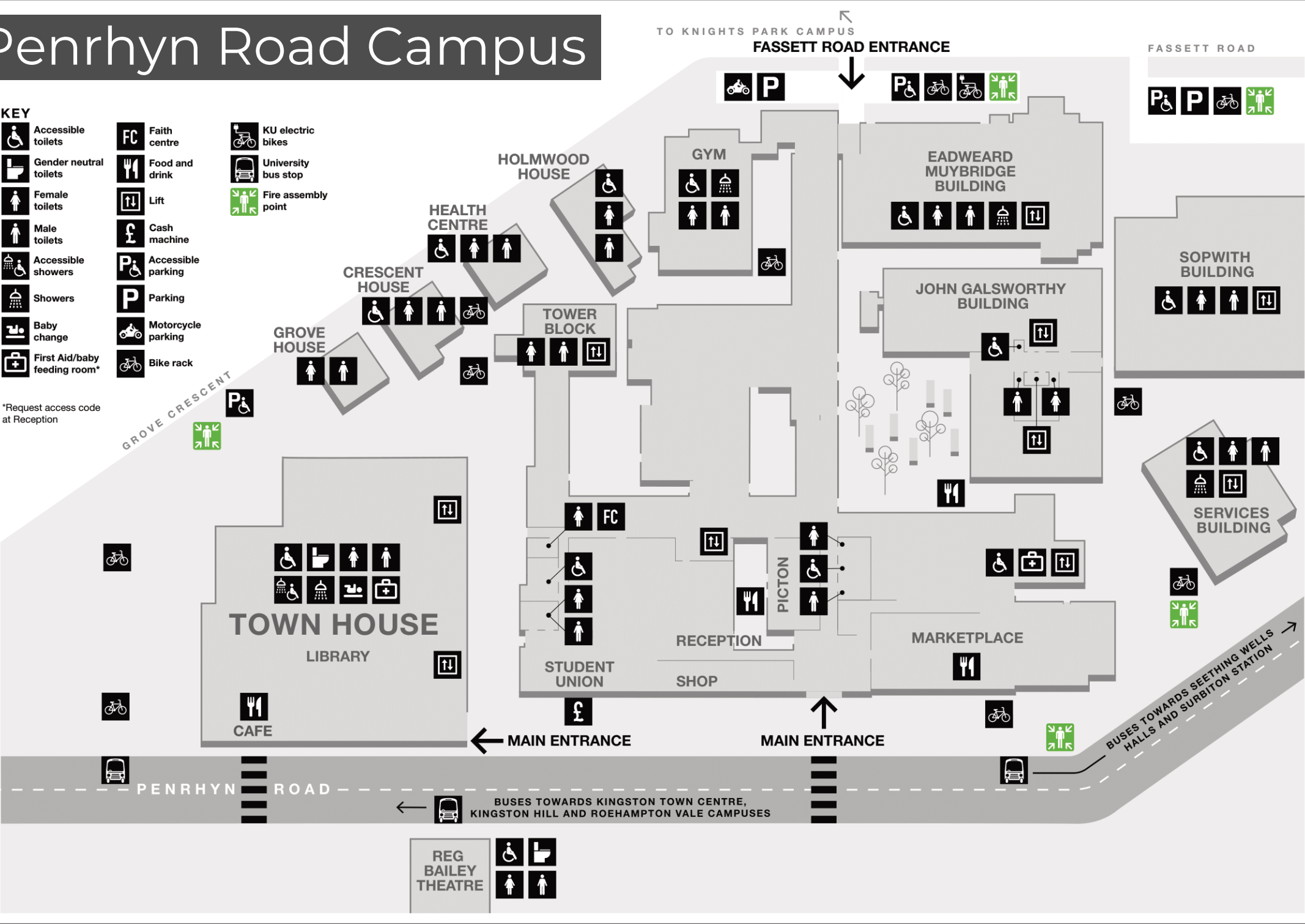
Public liability insurance of a minimum of £5 million is required for all bookings (drones, significant set dressing, special effects etc may require £10 million +).



Penrhyn Road Campus

- KEY**
- Accessible toilets
 - Gender neutral toilets
 - Female toilets
 - Male toilets
 - Accessible showers
 - Showers
 - Baby change
 - First Aid/baby feeding room*
 - FC Faith centre
 - Food and drink
 - Lift
 - Cash machine
 - Accessible parking
 - Parking
 - Motorcycle parking
 - Bike rack
 - KU electric bikes
 - University bus stop
 - Fire assembly point

*Request access code at Reception



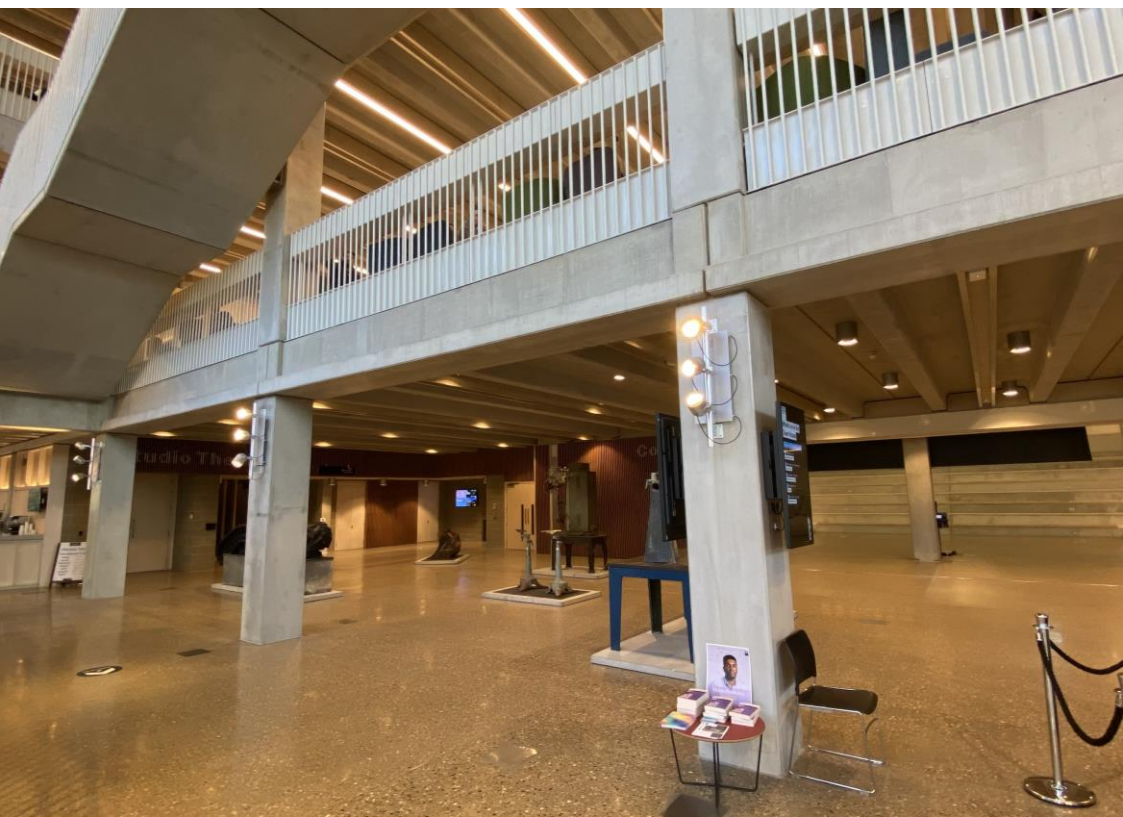
REG
BAILEY
THEATRE

Town House



The Courtyard

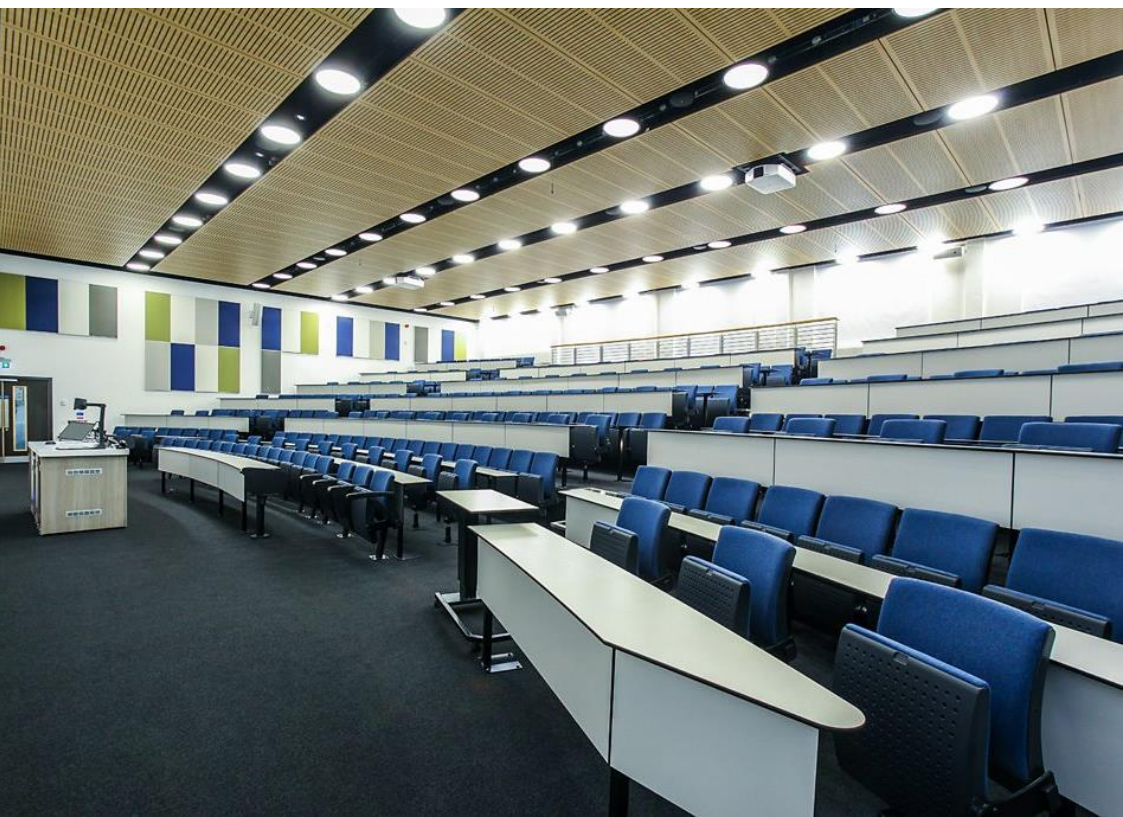
















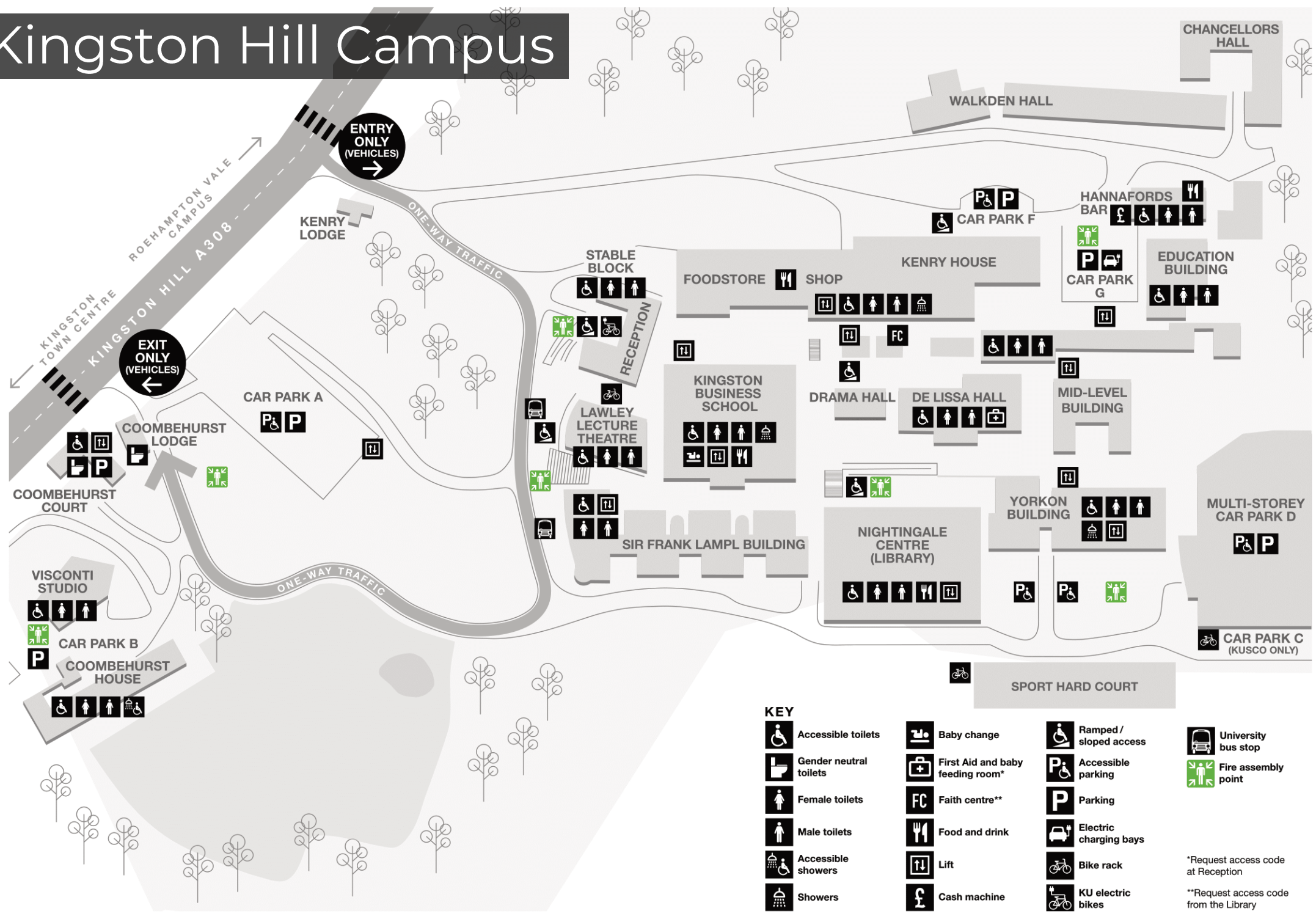
Faith Centre



Fitness Centre



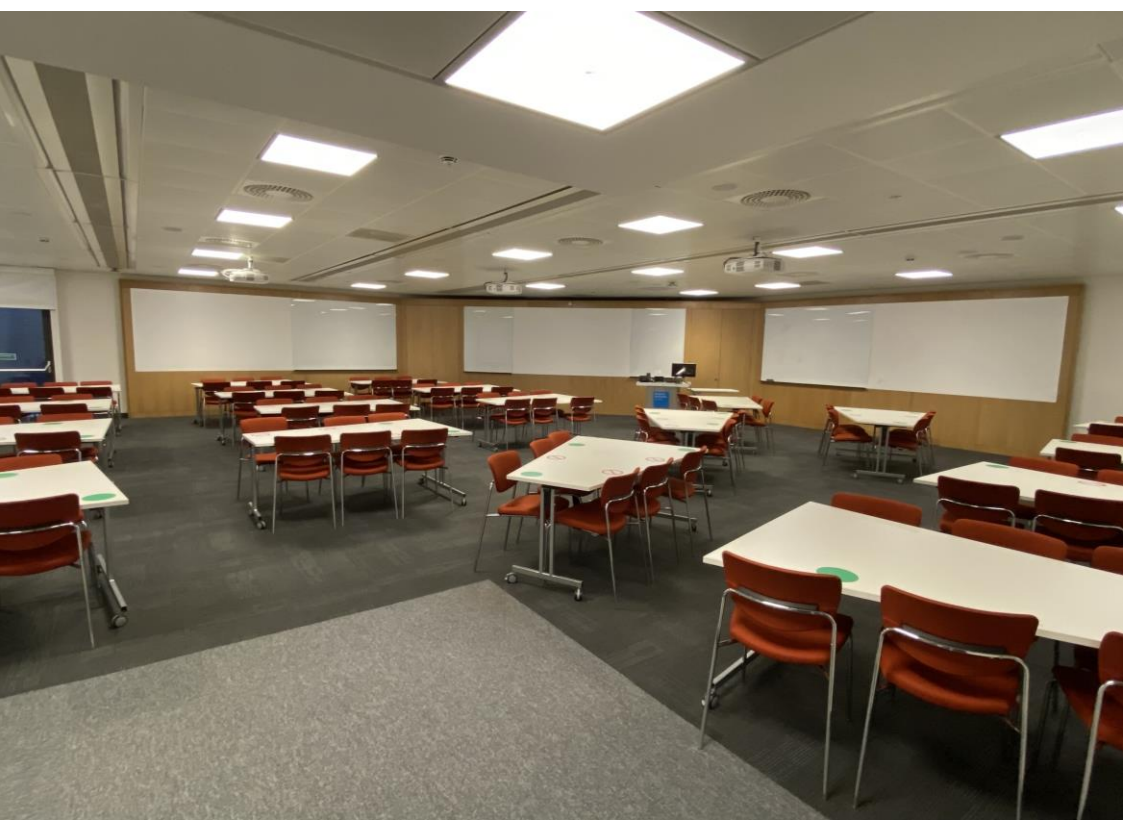
Kingston Hill Campus



KEY

	Accessible toilets		Baby change		Ramped / sloped access		University bus stop
	Gender neutral toilets		First Aid and baby feeding room*		Accessible parking		Fire assembly point
	Female toilets		Faith centre**		Parking		
	Male toilets		Food and drink		Electric charging bays		
	Accessible showers		Lift		Bike rack		
	Showers		Cash machine		KU electric bikes		

*Request access code at Reception
 **Request access code from the Library



Coombehurst House









Knights Park Campus

- KEY
-  Accessible toilets

 Food and drink

 Bike rack

 Gender neutral toilets

 Lift

 Fire assembly point

 Female toilets

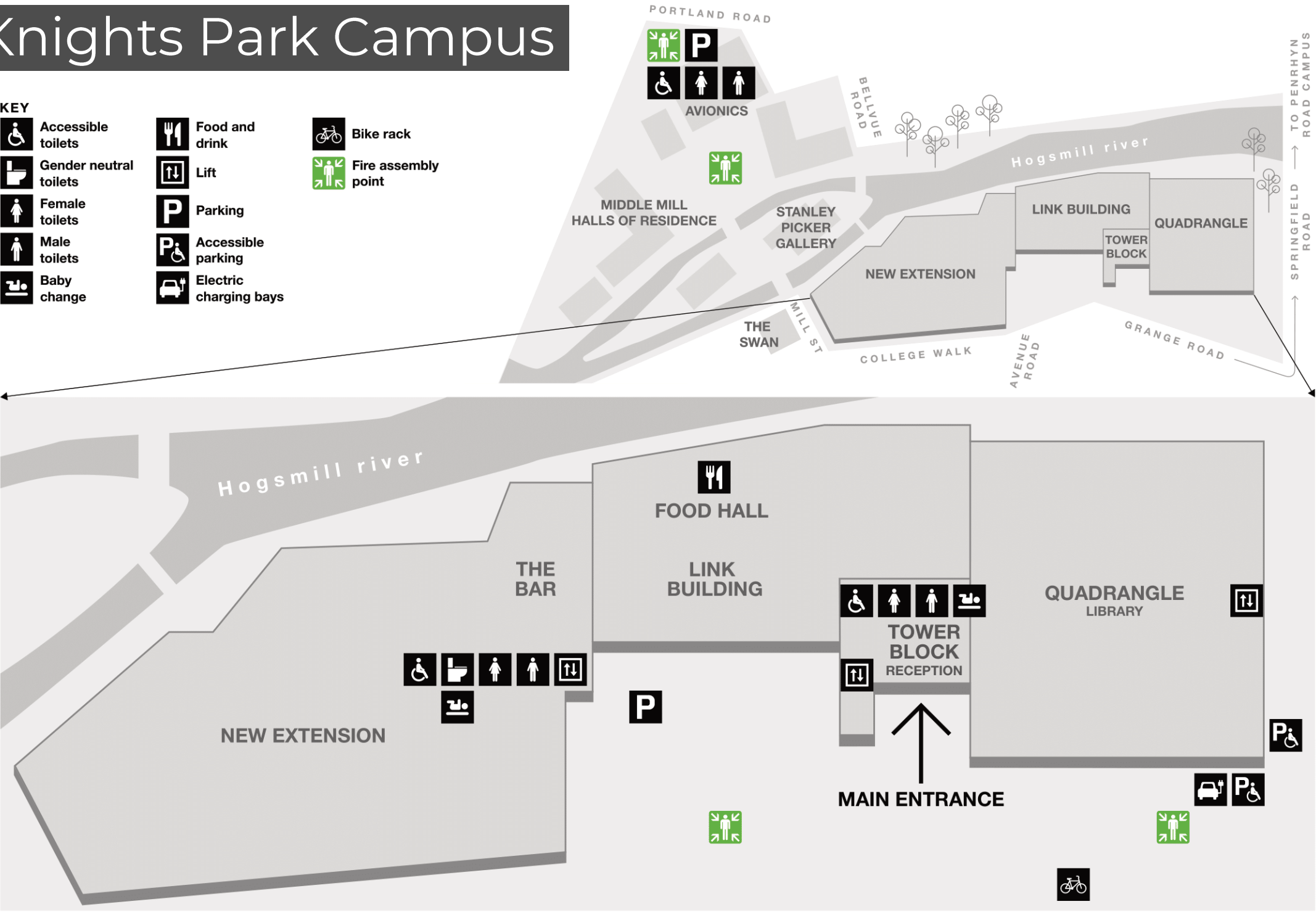
 Parking

 Male toilets

 Accessible parking

 Baby change

 Electric charging bays



School of Art



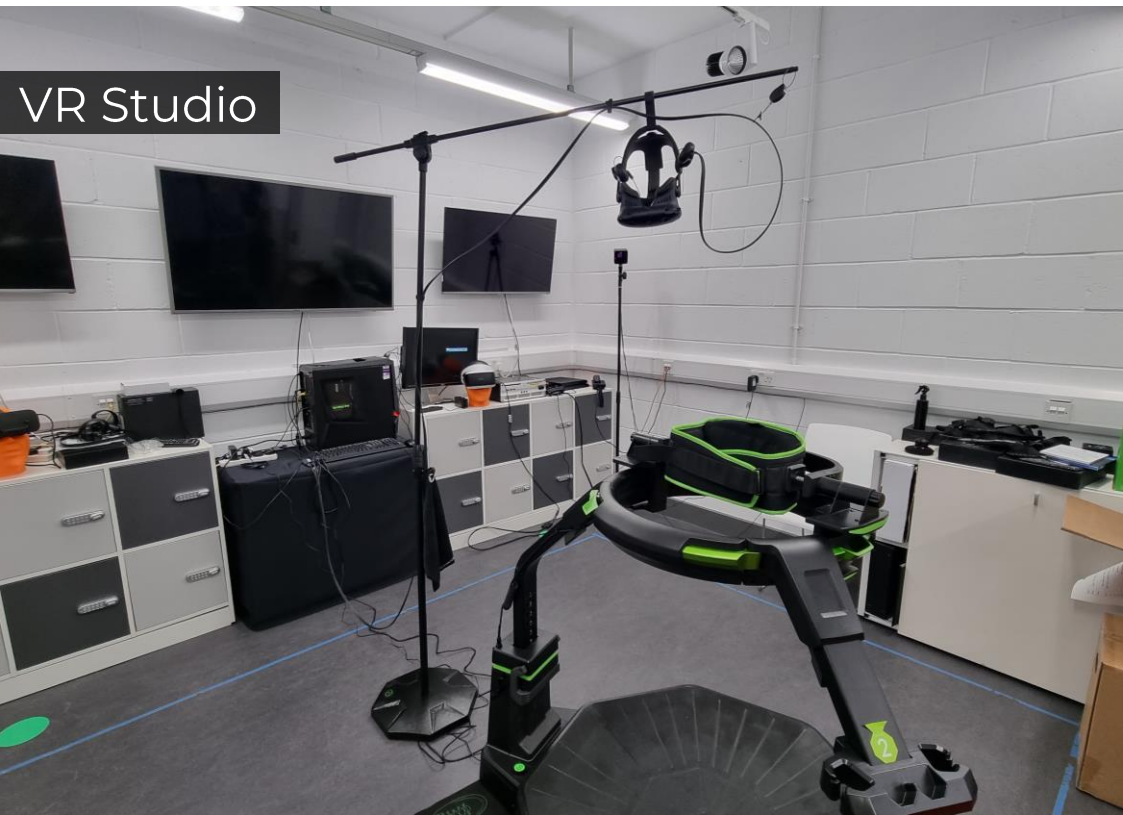
Film/Photography Studios



Sound Recording
Studio



VR Studio



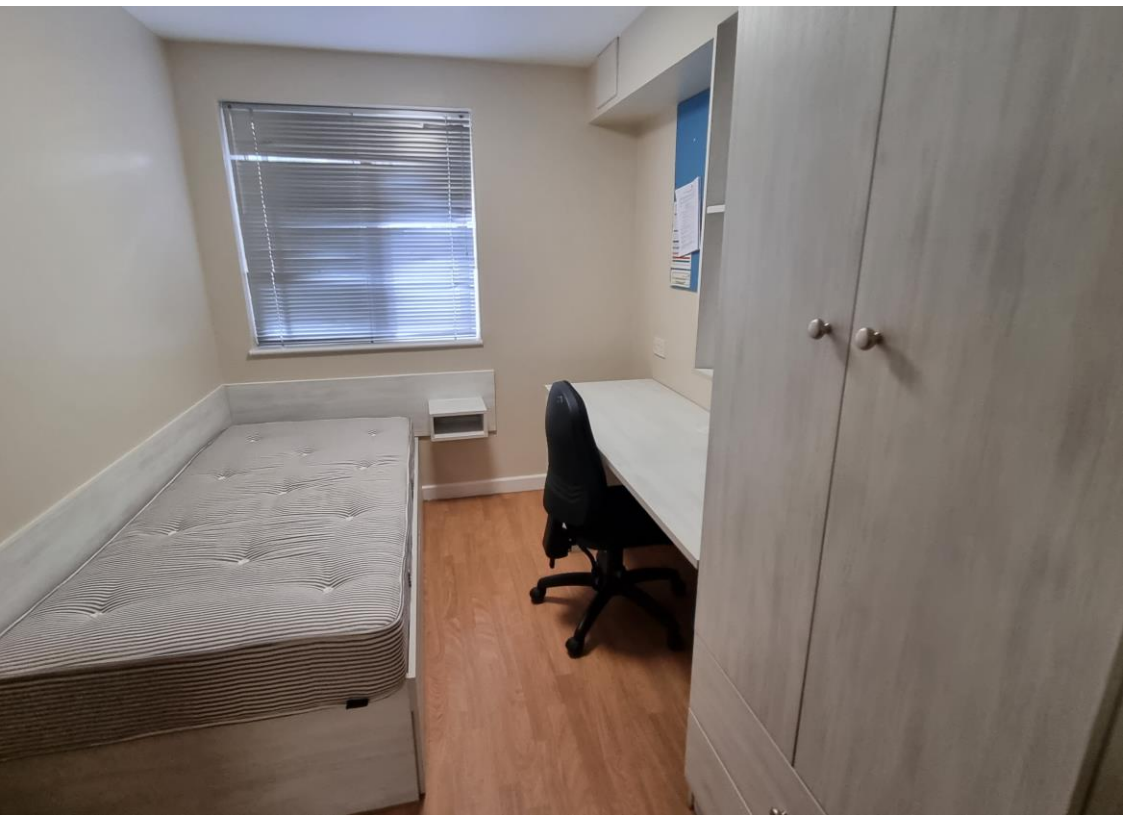






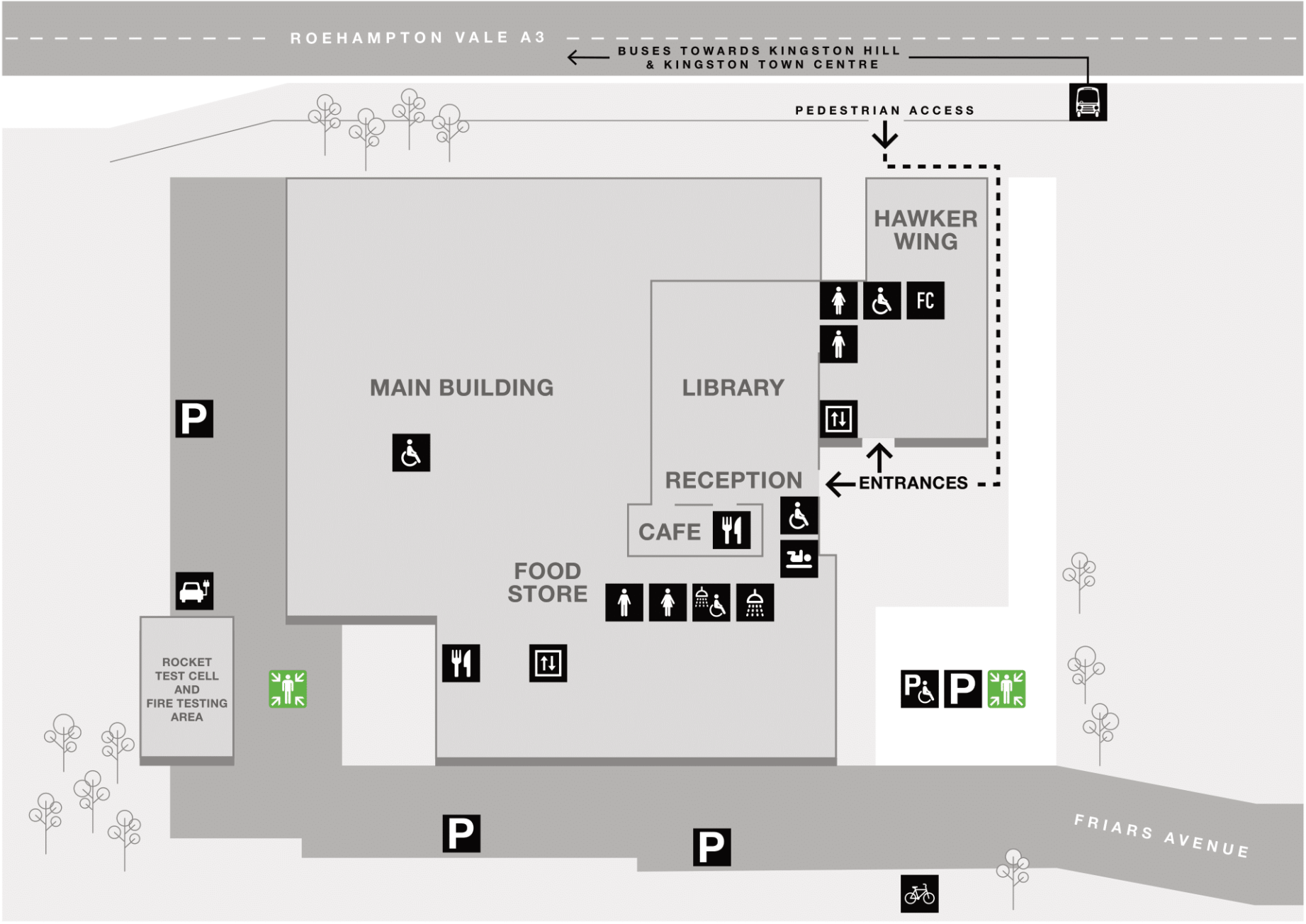






Roehampton Vale Campus

- KEY**
- Accessible toilets
 - Female toilets
 - Male toilets
 - Accessible showers
 - Showers
 - Baby change
 - Faith centre
 - Food and drink
 - Lift
 - Accessible parking
 - Parking
 - Electric charging bays
 - Bike rack
 - University bus stop
 - Fire assembly point







Tolworth Sports Ground



www.filmfixer.co.uk

T: 020 3904 4545

E: kingstonuni@filmfixer.co.uk

**Kingston
University**
London

