

# Second Home

Clerkenwell Green  
Holland Park  
London Fields  
Spitalfields

SECOND  
HOME

FILM  
FIXER



# Contents

**3.** Introduction

**4 – 7.** Clerkenwell Green

**8 – 11.** Holland Park

**12 – 15.** London Fields

**16 – 21.** Spitalfields

**22.** Tech Specs

Floor plans and full photo banks  
are available upon request

**T:** 020 3904 4545

**E:** [secondhome@filmfixer.co.uk](mailto:secondhome@filmfixer.co.uk)

[www.filmfixer.co.uk](http://www.filmfixer.co.uk)





# Introduction

**Second Home** is a collection of workspaces and cultural venues for entrepreneurs, innovators and social impact organisations. Founded in Hollywood and now with four locations in London, Second Home's buildings are versatile spaces able to host large scale filming and photography shoots.

Rates are calculated on a case-by-case basis. To obtain a quote, check availability and book a recce, please contact our dedicated team on **020 3904 4545** or **[secondhome@filmfixer.co.uk](mailto:secondhome@filmfixer.co.uk)**

To apply, please submit via **FilmApp** [here](#).



# Clerkenwell Green







Based moments from Farringdon Station, Second Home Clerkenwell Green sits at the south end of the historic Clerkenwell Close in Islington. Authentic mid-century seating, lighting, and fixtures signify their unique brand and attention to detail. This location offers several floors of office, breakout, and meeting room spaces as well as coffee stations. In the basement is a large room that is perfect for a green room space – with tables that can retract into the ceiling for multi-purpose use, toilets, and showers. The ground floor café can also double as a trendy coffee shop or bar.





# Holland Park







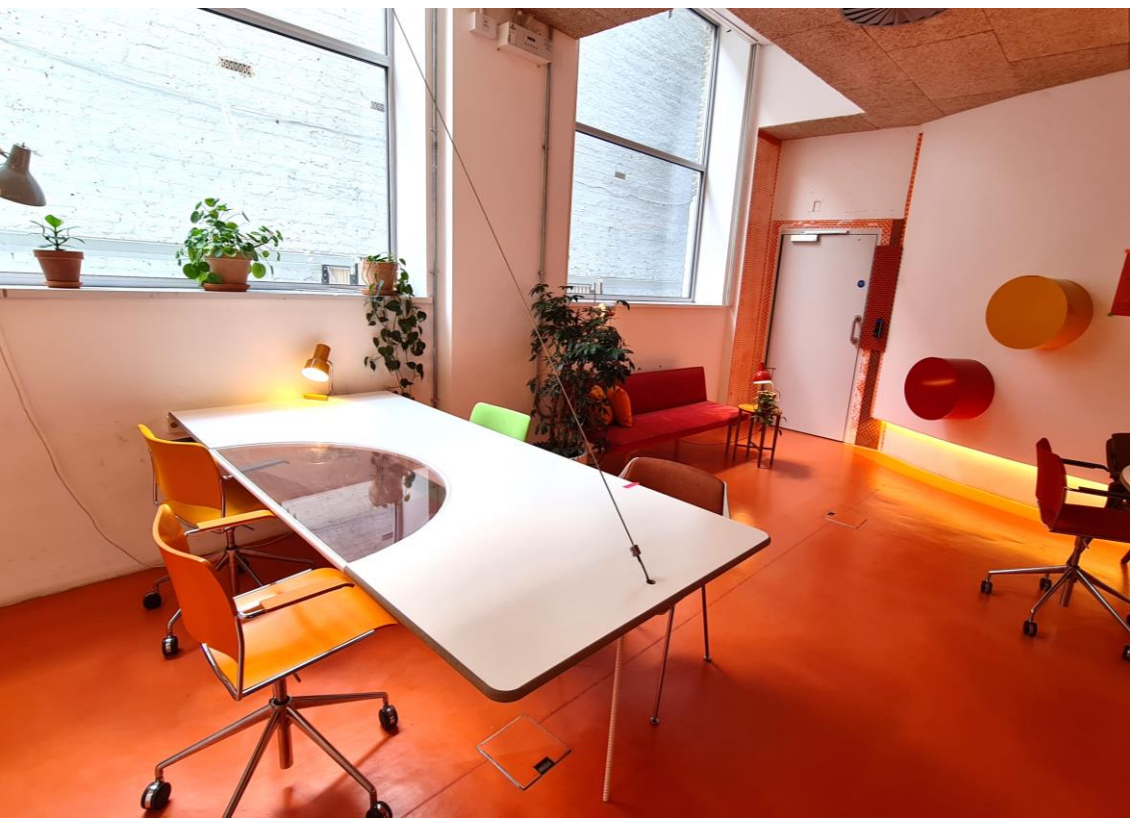


Though it is their smallest site, Second Home Holland Park features many unique characteristics of its own. The café / lounge space is covered by a bubble roof that can inflate or contract to adjust the temperature and light filtration. Additionally, there is an open-plan office space with multiple exposed beams overhead. Other notable features include an original, iron spiral staircase, a patio and a separate meeting room, which could function as a green room or wardrobe area.



# London Fields







In addition to the mid-century flare, Second Home London Fields features many unique architectural details: from iron staircase rails to old stone columns. The façade of the building is a huge translucent panel punctuated by circular openings and is made from the fluorine-based plastic EFTE. This location also has numerous meeting rooms that are perfect for filming or green room space, several large office spaces, a popular café and access to a roof terrace with breath-taking views of the City. Also included is a large multi-purpose room with their unique, retractable, floating tables and a patio space that could double as a brick alleyway. The venue is located just round the corner from London Fields and Broadway Market plus is a short walk from Hackney and Bethnal Green.





# Spitalfields

Located just off Brick Lane, Second Home Spitalfields could double for a rooftop bar, a club, a restaurant or even a members' club.

The venue can play host for crew / SA holding as well as green room, wardrobe and make-up space whilst its superb café can cater for crews.



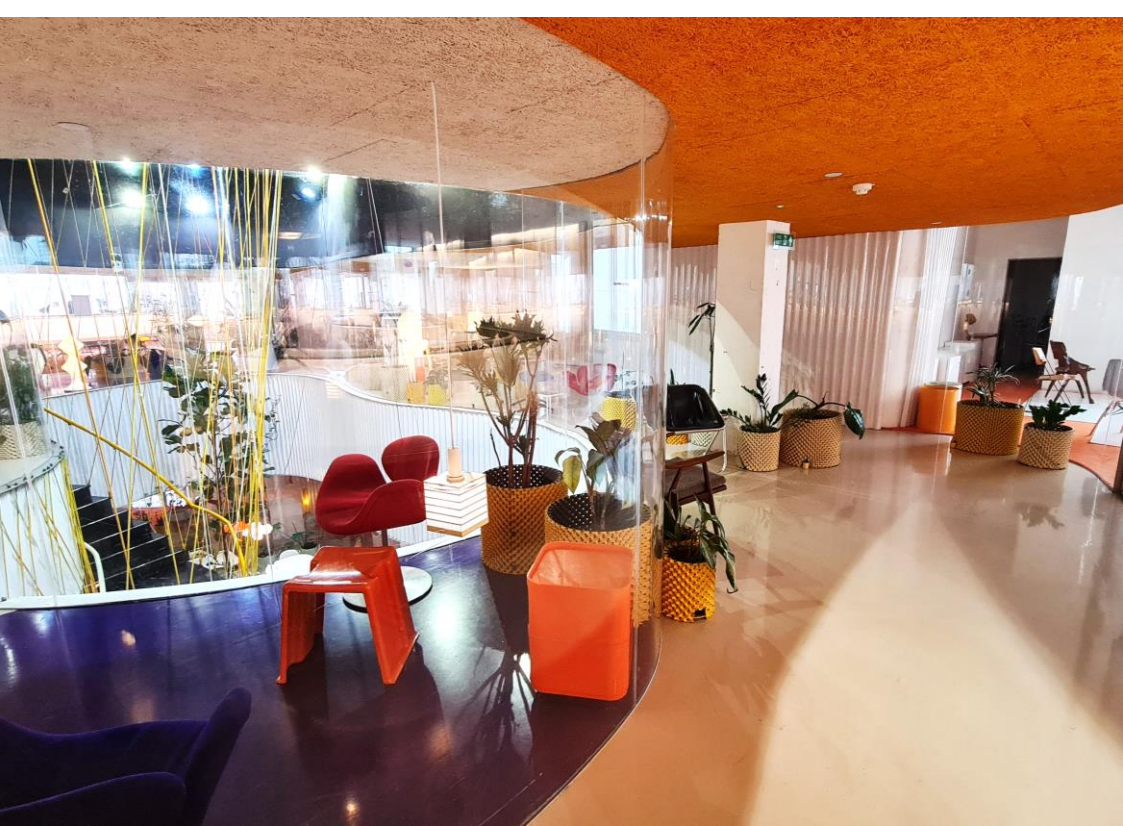






Second Home's original London venue is housed in a remarkable eight story Victorian building. A renovation took place in 2014, converting the venue into a stunning co-working space with futuristic, bright architecture and intricate design detail with authentic mid-century seating, curving transparent walls and eclectic lighting and accessories. Arguably the most attractive feature is The Rooftop which offers breath-taking views across the City. The venue is located in the heart of East London, moments away from the Truman Brewery unit base and the delights of Spitalfields Market.







Second Home Spitalfields' other intriguing features include a counterweight and pulley system for the entrance door and its huge steel meeting table which can rise into the void above to create a clear floor. Furthermore, one cannot but help notice the thousands of potted plants which grow in soilless hydroponic conditions.



# Technical Specifications

## Clerkenwell Green

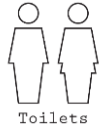
Clerkenwell House, 45-47 Clerkenwell Green, London, EC1R 0EB

what3words: ///leader.clouds.talent

## London Fields

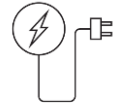
125-127 Mare Street, London, E8 3SJ

what3words: ///worker.afford.ears



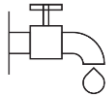
Toilets

Available on site



Electricity

Domestic supply only



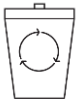
Water

Available on site



Catering

On-site cafes can cater for crews



Waste Disposal

Crews must arrange waste disposal. Any waste must be removed from site by the end of the booking



Green Room

Private rooms available at each site for green room, wardrobe and hair / make-up space

## Holland Park

48-49 Princes Place, London, W11 4QA

what3words: ///hopes.oasis.slang

## Clerkenwell Green

68 Hanbury Street, London, E1 5JL

what3words: ///alien.shovels.loser



Parking

### Clerkenwell Green –

- **Unit base:** Amwell Street – 5 min drive / 0.6 miles – via FilmFixer
- **Parking suspensions:** via FilmFixer

### Holland Park –

- **Unit base:** Westway Sports Centre - 5min drive / 0.9m miles – via AD Locations ([james@adlocations.com](mailto:james@adlocations.com))
- **Parking suspensions:** via RBKC Film Office ([filmoffice@rbkc.gov.uk](mailto:filmoffice@rbkc.gov.uk))

### London Fields –

- **Unit base:** Victoria Park Lido – 7 min drive / 1.2 miles – via The Film Office ([towerhamlets@filmoffice.co.uk](mailto:towerhamlets@filmoffice.co.uk))
- **Parking suspensions:** via Hackney Film Office ([will.mclaverty@hackney.gov.uk](mailto:will.mclaverty@hackney.gov.uk))

### Spitalfields –

- **Unit base:** The Old Truman Brewery – 3 min drive / 0.5 miles ([events@trumanbrewery.com](mailto:events@trumanbrewery.com))
- **Parking suspensions:** via Tower Hamlets Film Office ([towerhamlets@filmoffice.co.uk](mailto:towerhamlets@filmoffice.co.uk))



Generators

Positions are allocated as follows:

- **Clerkenwell Green** – on street parking suspension via FilmFixer
- **Holland Park** – on street parking suspension via RKBC Film Office
- **London Fields** – alley owned by Second Home
- **Spitalfields** – yard owned by Second Home





[www.filmfixer.co.uk](http://www.filmfixer.co.uk)

T: 020 3904 4545

E: [secondhome@filmfixer.co.uk](mailto:secondhome@filmfixer.co.uk)

