



Strawberry Hill House & Garden

268 Waldegrave Rd, Twickenham, TW1 4ST

What3Words: ///hips.mirror.hurray



STRAWBERRY HILL
House & Garden



FILMFXR



Introduction

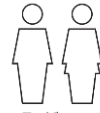
Strawberry Hill House is internationally famous as one of the finest examples of Georgian Gothic revival architecture. The House was the vision of writer, art historian and politician, Horace Walpole, who created this gothic masterpiece around an existing building he purchased in 1747.

The House features a stunning array of ornate spaces that must be seen to be believed. These include a gothic library, a grand staircase, gilt galleries, expansive gardens, ornate bedrooms and a cafe. A car park on site can facilitate tech parking and additional parking or marquee builds are possible on an adjacent lawn. Two, large green rooms on site are also perfect for supporting any scale shoot on site.

To apply, please submit via **FilmApp** [here](#).

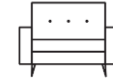


Technical Specifications



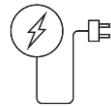
Toilets

Toilet access available in the Café, Green Room, Second Floor and next to the car park



Green Room

2 rooms on the ground floor and 2 rooms on the second floor



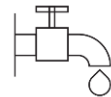
Electricity

Domestic supply only in the House and 3 phase power available by the car park



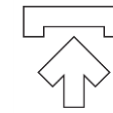
Generators

No restrictions. Positions must be agreed in advance



Water

Available in the House and in 3 locations around the grounds (by the car park, front and back of the house)



Access

All shoots in the House must be supervised. Combi codes required for access to the grounds and car park (outside of 9am - 5pm)



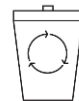
Vehicle Movement

No restrictions



Parking

30 spaces in the car park. Additional parking on the lawn is possible with prior approval and trackway



Waste Disposal

Crews must arrange waste disposal. Any waste must be removed from site by the end of booking



Catering

Food can be consumed in the green room spaces, outdoors and cafe only

The total House capacity is 200 people. Capacities for individual rooms available upon request





Location Conditions

- Open entrances must be supervised at all times – doors should not be propped open.
- Fire exits and evacuation routes must be kept clear at all times.
- Food and drink can only be consumed in green rooms, gardens and/or café.
- All cables must be covered.
- Floor protection must be used in interior locations.
- No fixtures, hangings or adhesives on walls, frames or doorways except on selected existing hooks with prior approval. Objects and paintings must be moved by professionals with prior approval.
- Painting is not permitted.
- Chandelier light bulbs can be swapped for period ones with prior approval.
- Dust, powders, glitter and candles and naked flame are not permitted.
- High heeled shoes must have heel caps.
- Trolleys must have rubber wheels.
- Furniture must be lifted, not dragged.
- Lighting must be kept away from combustible materials and fragile surfaces.
- Hazers, smoke machines, steamers hairspray etc cannot be used in the House.
- Walls, doors, floors, stairways etc must be adequately protected during prep/shoot/strike.
- No equipment can be leant against walls, historic objects or surfaces and should be at least 1m from uncased objects.
- Only Green Rooms can be used for hair and make-up.
- Smoking is not permitted in the House.
- Electrical equipment must have a current Portable Appliance Test (PAT) certificate.
- Additional heating requirements must be agreed in advance.
- Fresh flowers, plants and/or foliage must be approved in advance.
- Floors cannot be mopped; only careful sweeping is allowed.
- Spillages of any kind must be reported to a member of staff for immediate treatment.

Rates

Due to Strawberry Hill House's status as a charity and extremely busy calendar, we regret that only commercial applications are considered, regardless of the scale and location. As such, **we are unable to accept proposals from students or charities** that cannot match the **minimum rates** below:

- **House and Interiors – £1,500 + VAT per day**
- **Garden only – £750 + VAT per day**

Exact **rates are calculated based on the type of and needs of the production**. We take into consideration the following factors:

- Total amount of people on site (including artists, agency, contributors, entourage etc)
- Amount of time on site (including estimated prep. / strike time and hold days)
- Location(s) required (for shoots in the Museum, which rooms)
- Scale of equipment (ie. drones, cranes, generators)
- Level of exclusivity or closure required
- Parking requirements (ie. unit base, tech vehicles, caterers, crew cars)
- Additional spaces required (ie. for green rooms, catering, crew/crowd holding, video village)
- Budget (your maximum budget for this location)
- Type of production (ie. studio vs independent feature, HETV vs unscripted comedy, luxury brand vs independent shop)

To receive a quote, **please email your requirements to strawberryhillhouse@filmfixer.co.uk**. We will provide you with an initial, estimated quote to be used as a guideline. Once we receive your application and final proposal, we will supply a final quote along with the **costs of any staffing required to supervise your hire**. Staff costs fluctuate depending on the time of year but usually fall between £15-30+VAT p/hour p/staff member

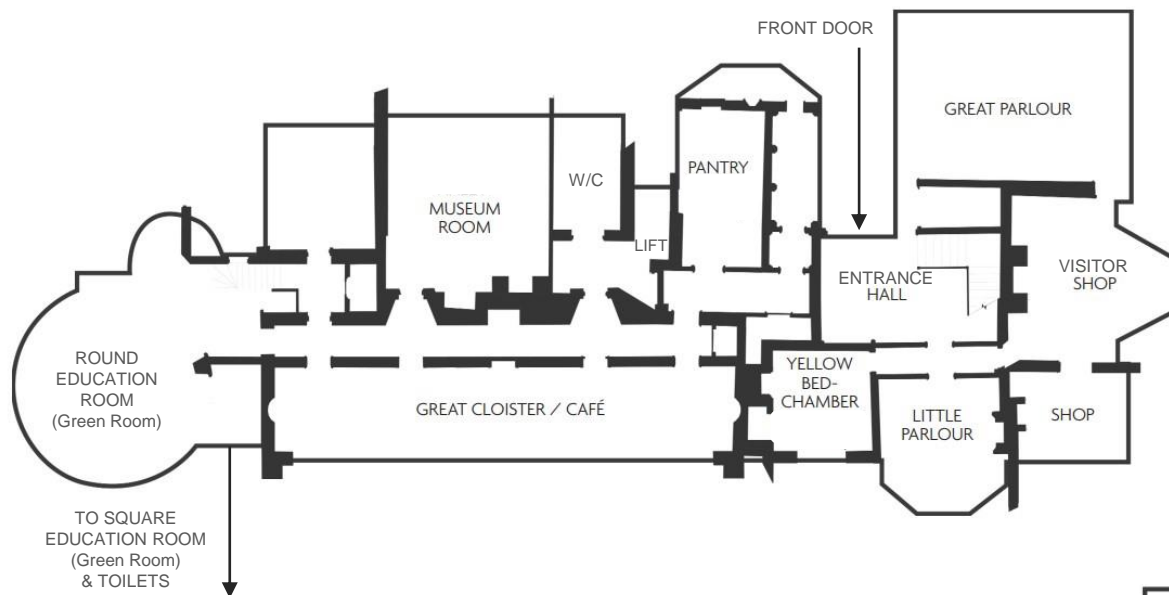
We also **charge an administration fee of £75 + VAT per hour of processing time**. Each booking will require a different amount of processing depending on requirements and changes. An estimated guide is as follows:

- Studio feature / HETV in the House: 6-10 hours
- Photo shoot in the House: 4-6 hours
- Studio feature / HETV in the Gardens: 4-6 hours
- Photo shoot in the Gardens: 2-4 hours
- Parking only: 1 hour

All rates quoted are subject to VAT. Refundable damage deposits are taken for all bookings.

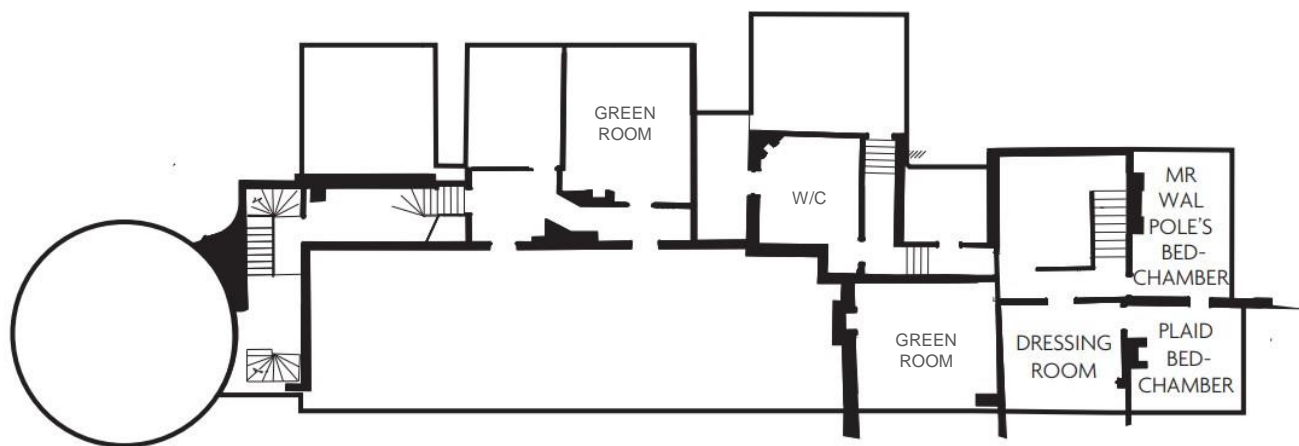
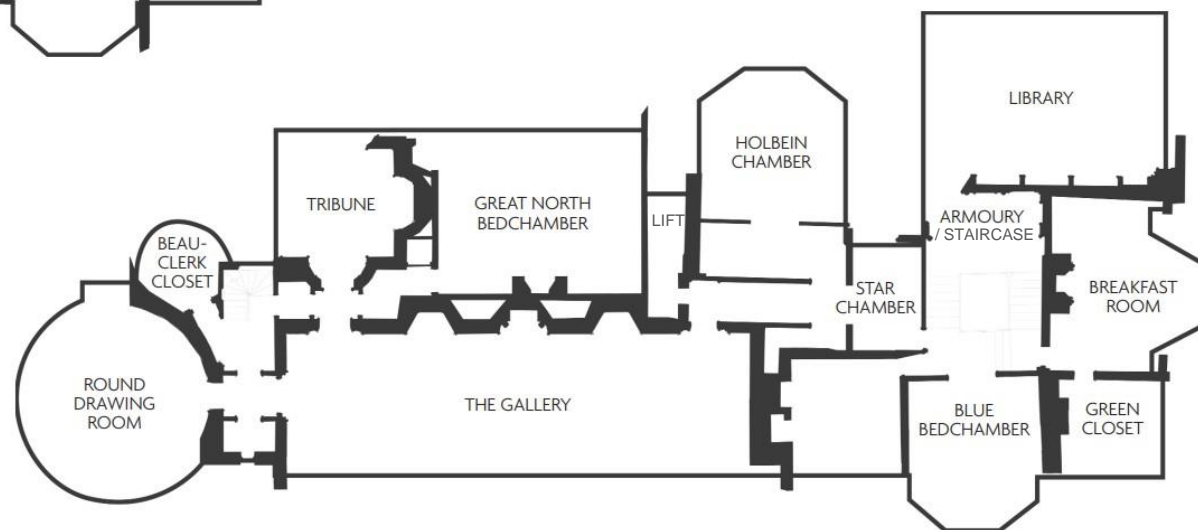
Non-refundable holding deposits are taken for larger scale or longer length bookings. Cleared payment is required before the start of all bookings. **Public liability insurance of a minimum of £5 million** is required for all bookings in the Garden and (drones, significant set dressing, special effects etc may require £10 million +) and **Public liability insurance of a minimum of £10 million** is required for all bookings in the House.





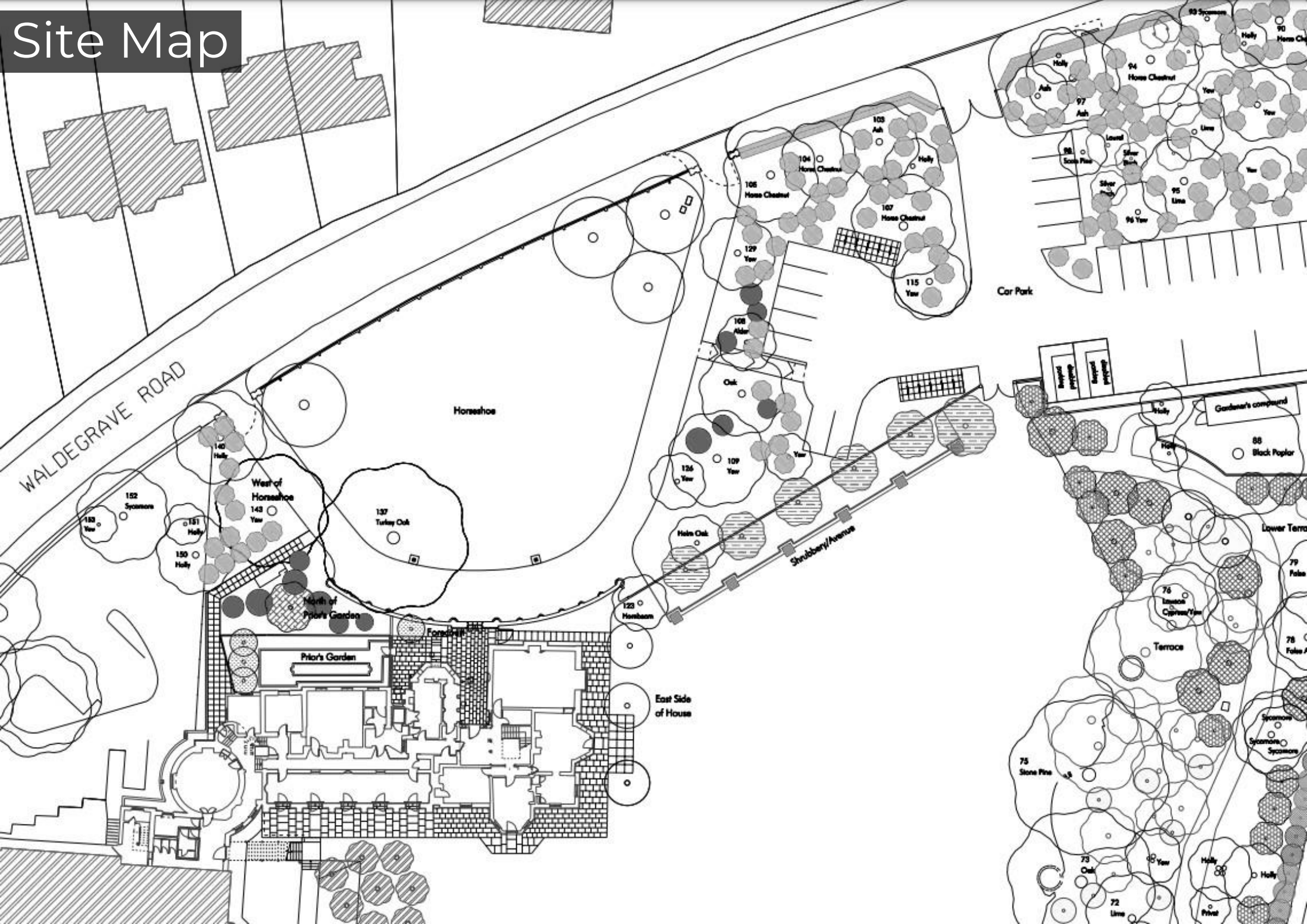
Ground Floor

First Floor



Second Floor

Site Map





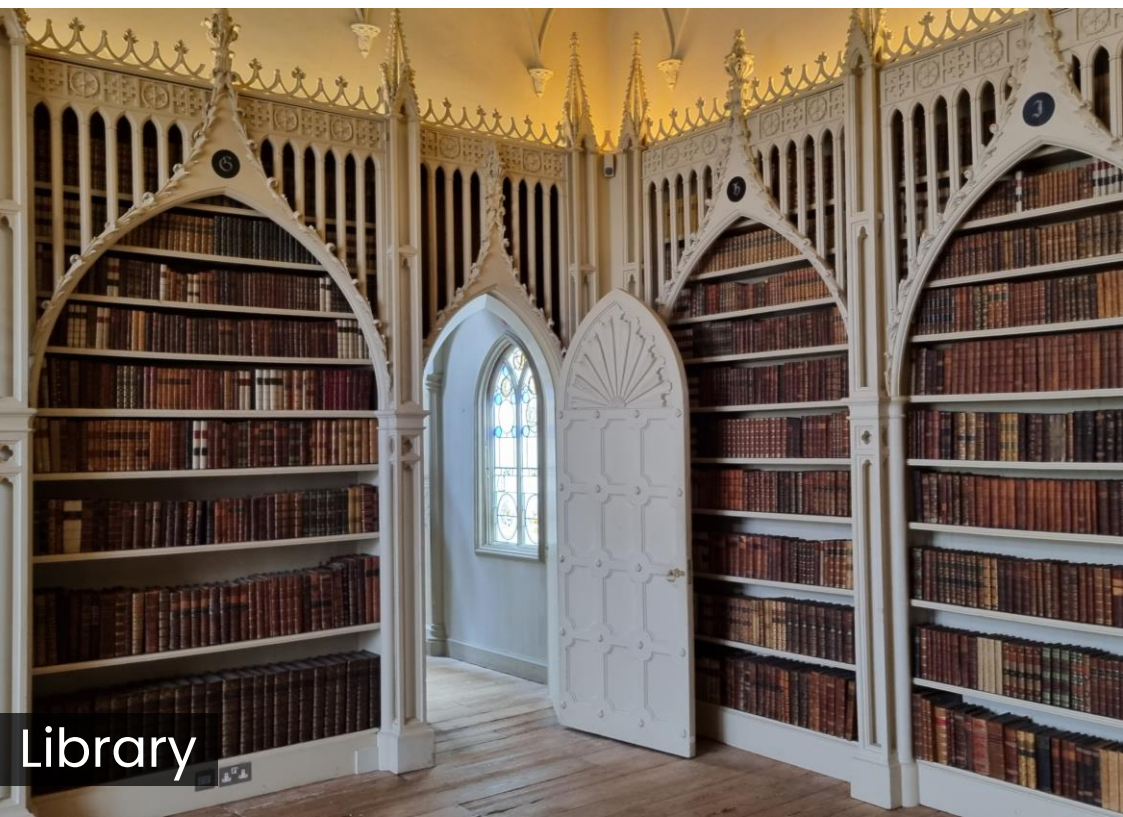


Gallery



Round Drawing Room





Library





Staircase



Tribune



Great North Bedchamber





Holbein Chamber



Blue Bedchamber



Breakfast Room





Green Closet



Great Parlour





Prior's Garden



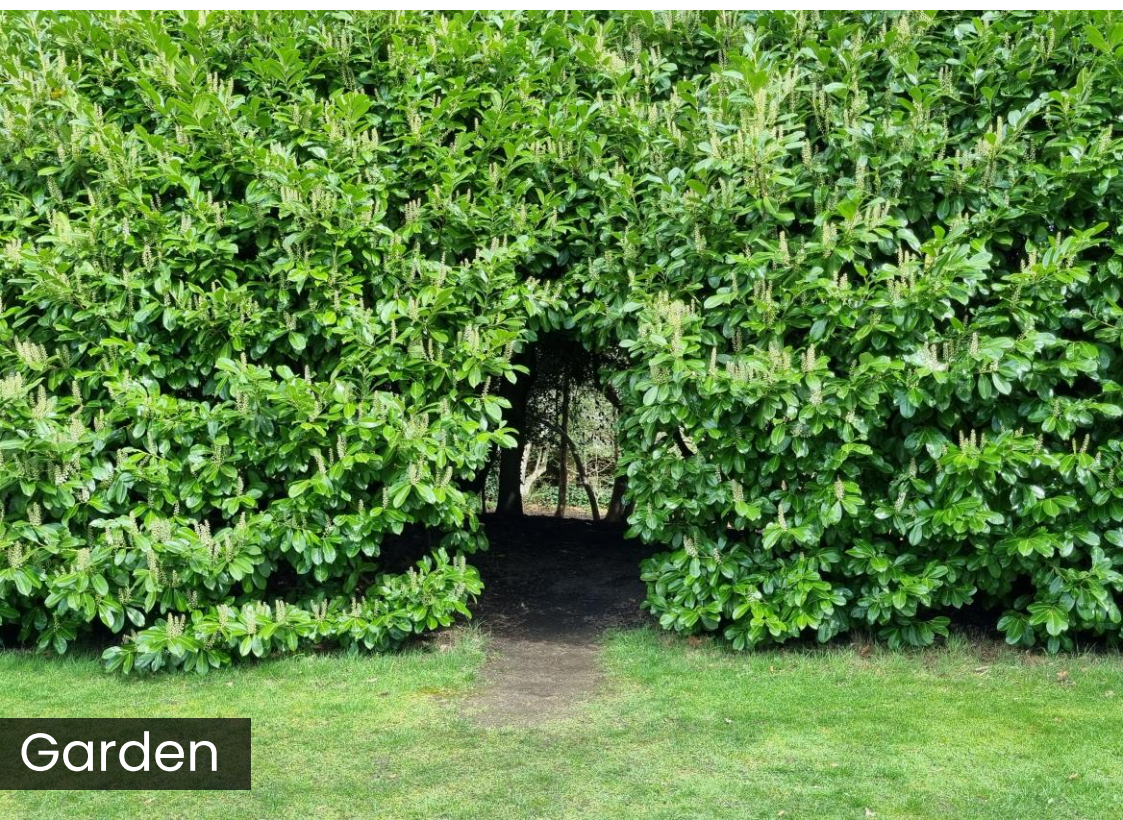
Great Cloister / Cafe





House Exteriors





Garden





Car Park



Green Room (Square Education Room)



Green Room (Round Education Room)



2nd Floor Green Room



2nd Floor Green Room





www.filmfixer.co.uk

T: 020 3904 4545

E: strawberryhillhouse@filmfixer.co.uk



STRAWBERRY HILL
House & Garden



FILM FIXER