



Butler's Wharf

Shad Thames, Southwark, London, SE1 2YE

what3words: ///pages.joke.alert



FILMFIXER



Introduction

Butler's Wharf riverfront is an iconic riverside setting with a fantastic view of Tower Bridge, the Thames and the City's skyline in the distance. At any given time, there are boats docked along the bank and the level of the river rises and falls.

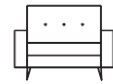
The Blueprint Cafe, located on the Pier, can function as a green room space for productions of any size, as well as provide parking.

To apply, please submit via FilmApp [here](#).



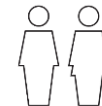
Site Terms & Specs

- The location is surrounded by residential properties and, as such, crew are required to keep voices and other sounds low at all times.
- Extensive business / resident letter drops are required for shoots with 15 + crew.
- Lights must be positioned as to not shine into residential properties.
- Access and egress to all properties must be maintained at all times.
- Alterations or removal of the festoon lights, benches and plaques is not possible.
- Vehicles (inc. generators) are not permitted on the pier.
- Roof access to the Butler's Wharf Building (residential) is possible.



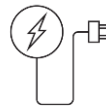
Green Room

Blueprint Cafe at 28 Shad Thames (see page 8) is available for green room space – hired through FilmFixer



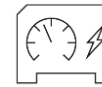
Toilets

Available in Blueprint Cafe



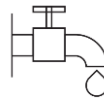
Electricity

Local supply available at Blueprint Cafe



Generators

Generators must not be used between 9pm and 8am. Only silent generators are permitted. To be positioned in the Suspendable council loading bays outside 28 Shad Thames (via FilmFixer)



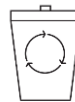
Water

Available in the Blueprint Cafe



Catering

Dining is permitted in Blueprint Cafe



Waste Disposal

Crews must arrange waste disposal. Any waste must be removed from site



Access

24/7 public access to the Pier

Blueprint Café accessible during pre-arranged times



Vehicle Movement

Vehicle movement is not permitted in the Shad Thames area between 9pm and 8am.

Vehicles driven / parked in Shad Thames must weigh less than 7,500 kg.



Parking

On street council parking bay suspensions can be applied for via Southwark Film Office, operated by FilmFixer

Rate Card

Rates are calculated on a case-by-case basis thus the below should be treated as an approximate guide.
Shoots for studio features, HETV and major brands may be charged at higher rates.
All rates are exclusive of VAT. Please see the next page for Terms and Conditions.

Crew size	Location fee	Admin fee	Returnable damage deposit
Students, Charities, Micro-budget Indies	1 – 6 HOURS: £100	<p>£75 per hour of processing time.</p> <p>Each booking will require a different amount of processing depending on initial requirements and subsequent changes.</p> <p>An estimated guide is as follows:</p> <ul style="list-style-type: none"> • Studio feature / HETV: 6-8 hours • Photo shoot: 2-4 hours • Charity, student etc: 1-2 hours 	<p>Deposits are required if any alterations are granted, for stunts, SFX, longer term hires or productions with 50 + people etc.</p> <p>Deposit values are calculated on a case-by-case basis</p>
	6 – 12 HOURS: £250		
1 - 5	1 - 2 HOURS:		
	£100 per hour		
	3 – 6 HOURS:		
	£90 per hour		
6 - 15	7 – 12 HOURS:		
	£85 per hour		
	1 – 3 HOURS:		
	£300 - £500		
16 - 50	3 – 6 HOURS:		
	£500 - £750		
	6 – 12 HOURS:		
	£750 - £1,250		
51 +	1 – 6 HOURS:		
	£1,000 - £1,500		
	6 – 12 HOURS:		
	£1,250 - £2,500		
	1 – 6 HOURS:		
	£1,500 - £2,000		
	6 – 12 HOURS:		
	£2,500 - £5,000		

Green room:

Blueprint Cafe on Shad Thames
(toilets, water, local power)

£940 per day (no hourly or half day rates)

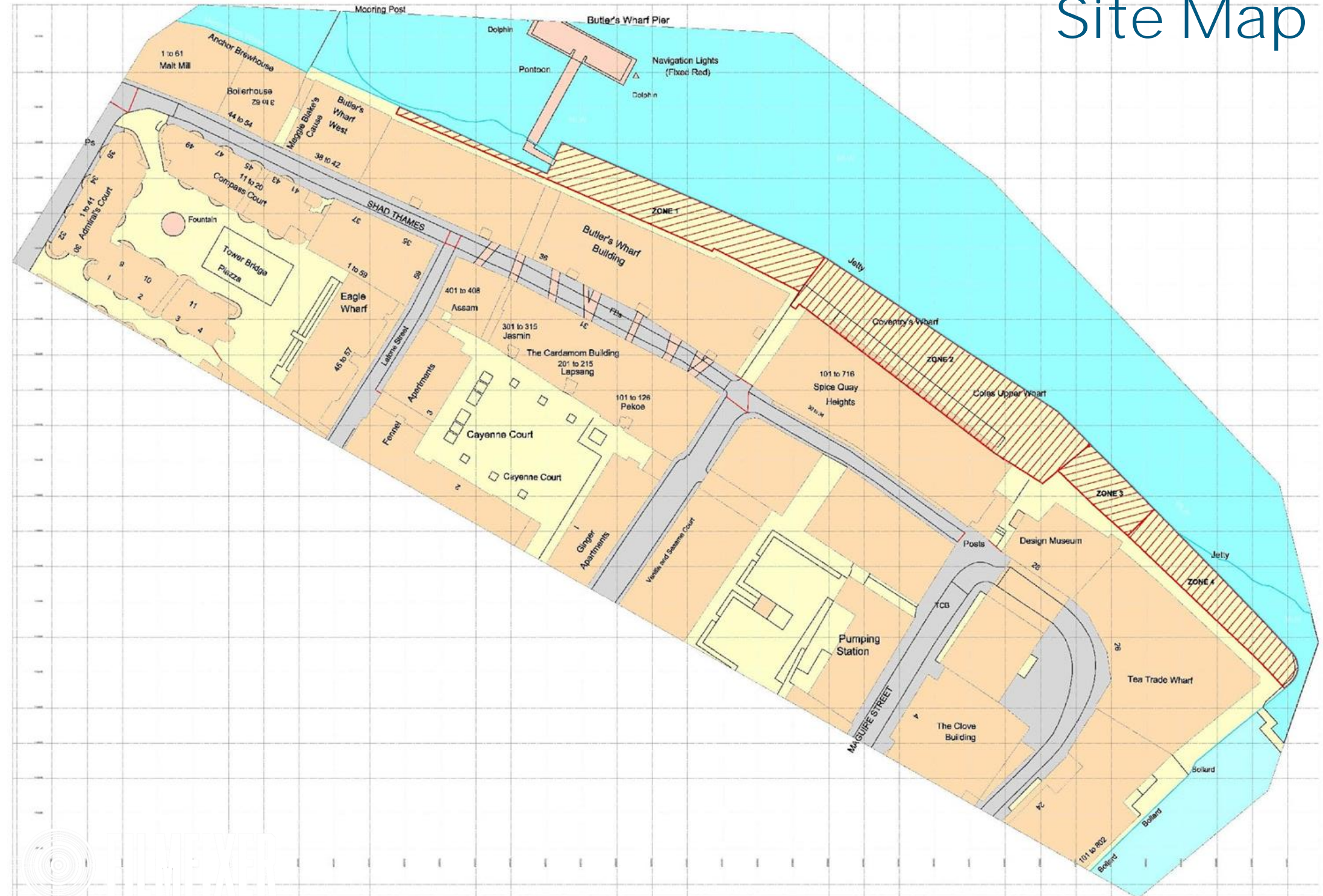


Hire Terms

- 'Crew size' should include cast, models, artists, presenters, contributors, chaperones and agency.
- Admin fees are calculated per hour of administrative time. The figures quoted are a minimum charge and may be multiplied accordingly for intensive applications.
- Students and charities must provide proof to be eligible for discounted rates. "Micro-budget Indies" are classed as low or no-budget, non-commercial productions (ie. unfunded films, personal portfolios, non-profit social media shoots etc).
- For all applications, payment must be made before the shoot. Payment can be made by card online, or by BACS with proof of payment or remittance. Please be aware that some charges may still apply to cancelled applications if already processed.
- You must have Public Liability Insurance with a minimum cover of £5 million in order to gain a licence to shoot.
- Security deposits may be requested for large-scale shoots or if any alterations are granted. If terms and conditions are not adhered to, the security deposit may not be returned.
- Additional terms and conditions may be introduced when further requests are able to be implemented.

To apply, please submit via FilmApp:
<https://app.apply4.com/filmapp/uk/filmfixer>

Site Map





Blueprint Cafe





www.filmfixer.co.uk

T: 020 3904 4545

E: locations@filmfixer.co.uk