



Finsbury Park Unit Base

Fees

Unit base: £1,350 + VAT per day

Deposit (returnable): £1,000

Admin fee: £150 – 175 + VAT

Overflow parking: £250+VAT (must be approved by film officer)

Lead in times

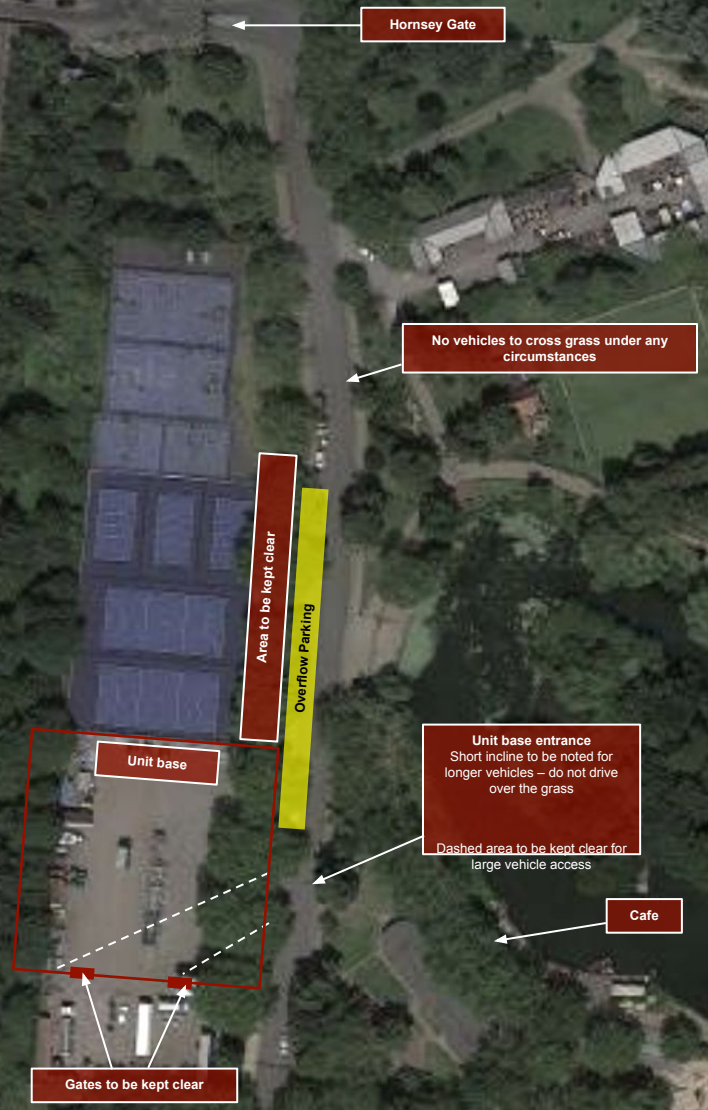
3 working days (subject to availability)

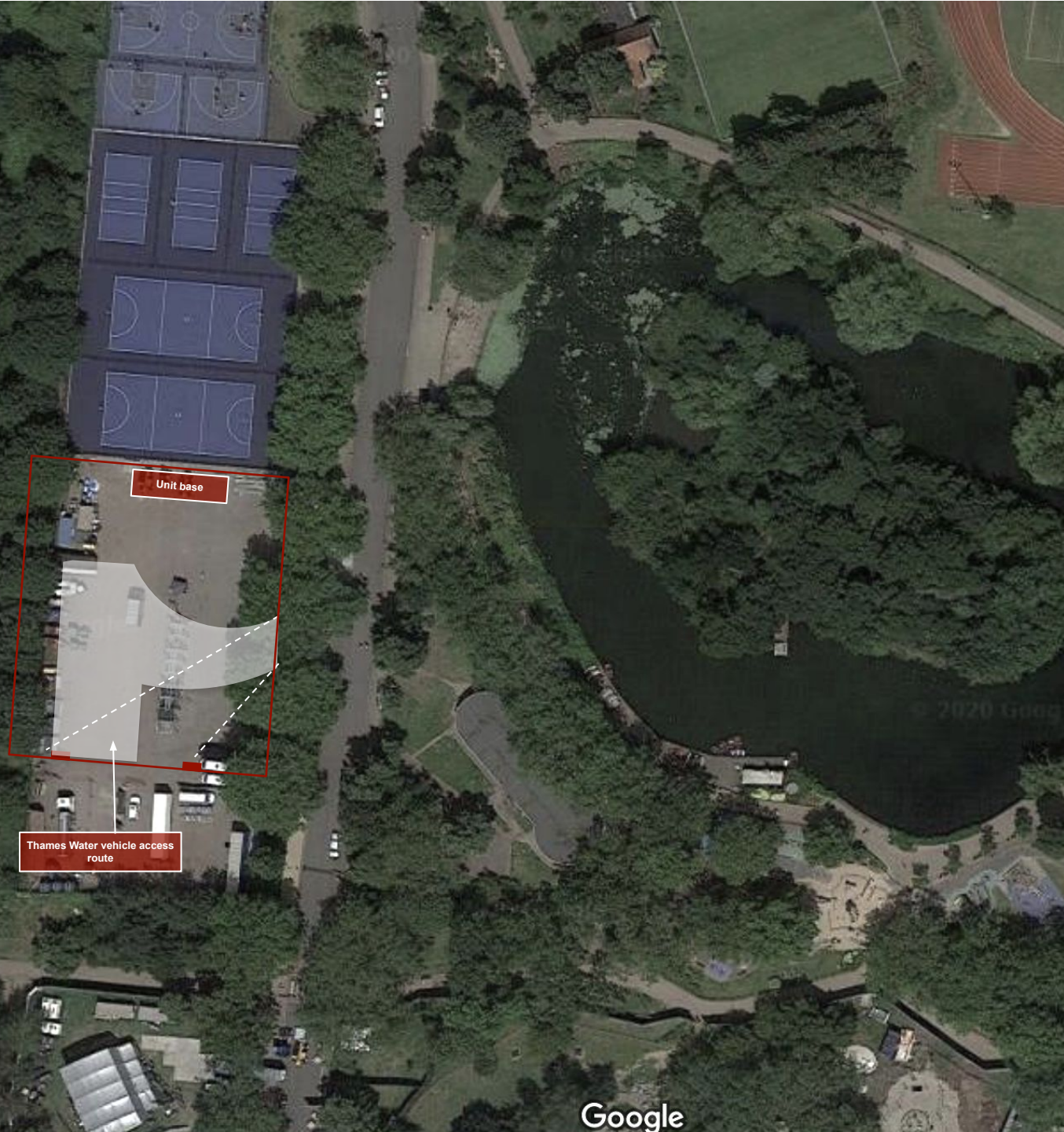
Availability

No restrictions to days or times

Terms and Conditions

- **No vehicles to cross grass under any circumstances. Deposits will be not be returned if this rule is breached**
- **Site perimeter:** In Autumn 2020/early Winter 2021, a Thames Water unit will be in the space south of the UB perimeter indicated on the map
- **Site restrictions:** Strictly must not drive over any grass or park on any roads that have not otherwise been agreed upon
- **Access:** Key and combi code required for out-of-hours access for Hornsey Gate. Key available from the FilmFixer offices
- **Overflow Parking:** Additional parking on west side of road may be available, please speak to Film Officer. Once permitted vehicles must not park on the pavements - works well for long vehicles
- **Water:** Unlimited water available privately from the building next to the café at £100 per day
- **Security:** 2 security guards required
- **Lighting:** 2-3 tower lights required
- **Thames Water Restrictions:** See separate image over





Finsbury Park Unit Base

Thames Water
Restrictions

Additional restrictions when large Thames Water vehicle booked in

White area needs to be clear for a large Arctic vehicle coming in and needs swing space.

Productions will be notified in advance if their dates coincide with this restriction.

After booking UB with ourselves, please contact Tom Shanahan (Site Manager) to coordinate shared use of the hardstanding on the below details.

Tom Shanahan
Project Manager
Mob: 07712-390-450

**Outlined areas are approximate,
advanced recce and contact
with Thames Water necessary**